



**Virto User Redirect Web Part
for Microsoft SharePoint
Release 1.2.4**

User and Installation Guide

Table of Contents

FEATURES LIST	3
SYSTEM/DEVELOPER REQUIREMENTS	3
OPERATING SYSTEM	3
SERVER	3
BROWSER.....	3
INSTALLATION AND ACTIVATION	4
INSTALLING VIRTO USER REDIRECT	4
LICENSE ACTIVATION	7
UPGRADING VIRTO USER REDIRECT	7
UNINSTALLING VIRTO USER REDIRECT	7
VIRTO USER REDIRECT ADJUSTMENT AND USAGE.....	9
VIRTO USER REDIRECT SETTINGS	9
USERS ALLOWED TO MANAGE VIRTO USER REDIRECT SETTINGS	10
ADDING NEW REDIRECT RULE	10
EDITING AND DELETING REDIRECT RULES	11
VERSION RELEASE HISTORY	12

Virto User Redirect for Microsoft SharePoint

Features List

Feature	Version
Redirecting for separate users and SharePoint groups. SharePoint groups can include AD security groups as well	1.0
Redirecting anonymous users	1.0
Redirecting can be allowed for a specific period of time	1.0

System/Developer Requirements

Operating System

Microsoft Windows Server 2008, 2012

Server

SharePoint Release 2013:

- Microsoft Windows SharePoint Foundation 2013 or Microsoft Office SharePoint Server 2013;
- Microsoft .NET Framework 4.5.

SharePoint Release 2010:

- Microsoft Windows SharePoint Foundation 2010 or Microsoft Office SharePoint Server 2010;
- Microsoft .NET Framework 3.5.

SharePoint Release 3:

- Microsoft Windows SharePoint Services v3 or Microsoft Office SharePoint Server 2007;
- Microsoft .NET Framework 3.5.

Note: *This product is not compatible with SPS 2003 and WSS v2.*

Browser

Microsoft Internet Explorer, Mozilla Firefox, Opera, Google Chrome.

Installation and Activation

This section describes how to install, upgrade, uninstall, or contact Support for the Virto User Redirect. Installation is absolutely similar for SharePoint 2010 and 2013 versions.

Installing Virto User Redirect

Before you begin, you need to make sure you have access to the server and your account must have the appropriate administrative privileges to install applications.

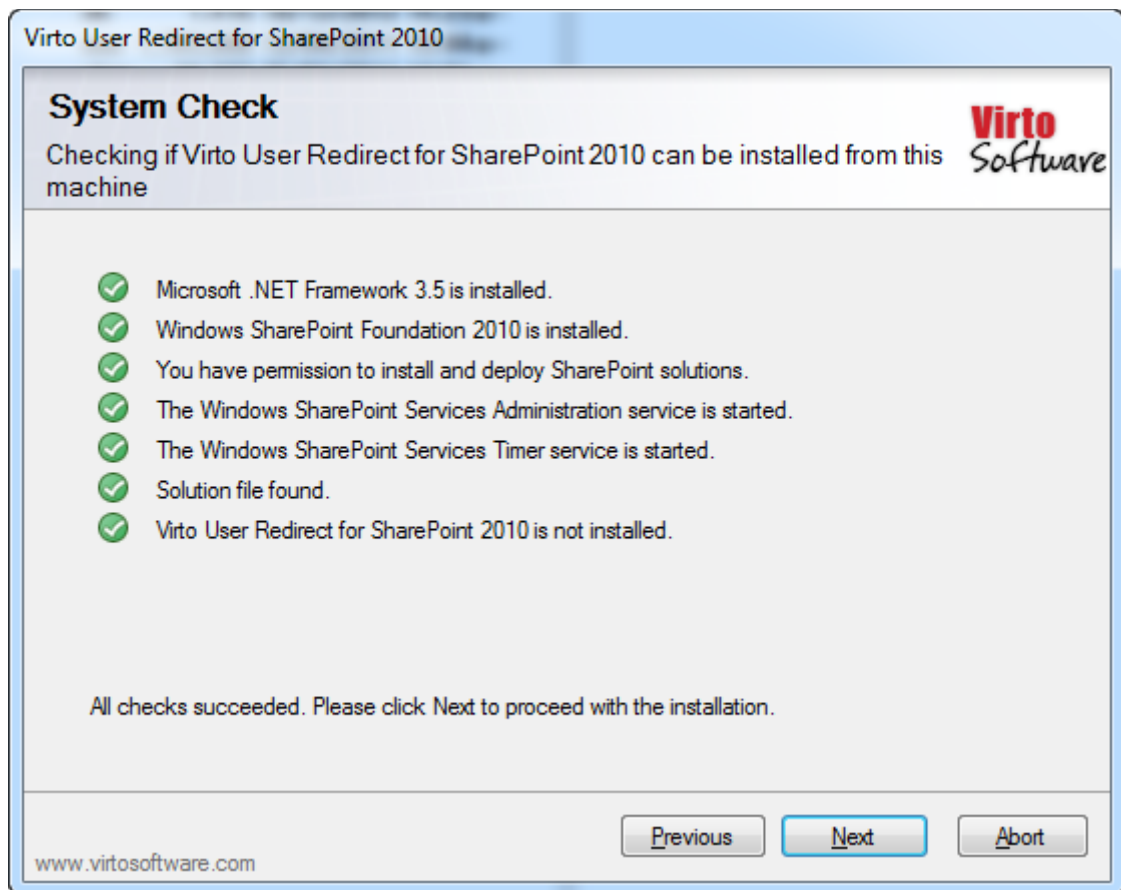
Virto User Redirect setup program provides links to the various installation components for the calendar.

To access Virto User Redirect Setup program download **Virto.SharePoint.UserRedirect.zip** file and unzip it. Run extracted Setup.exe file.

The setup wizard window will appear.

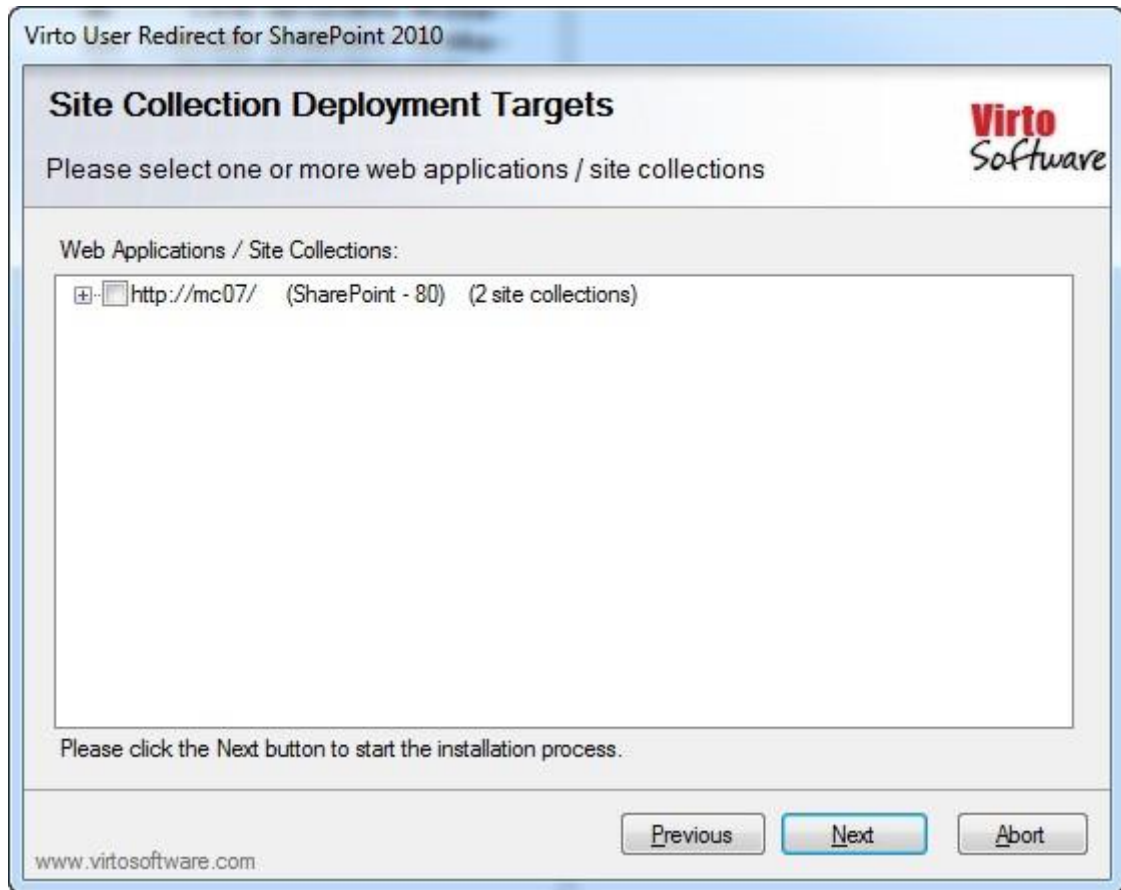


Virto User Redirect wizard performs a system check prior to the installation. All the system checks must be completed successfully in order to proceed with the installation. After the checks have completed, click "Next".

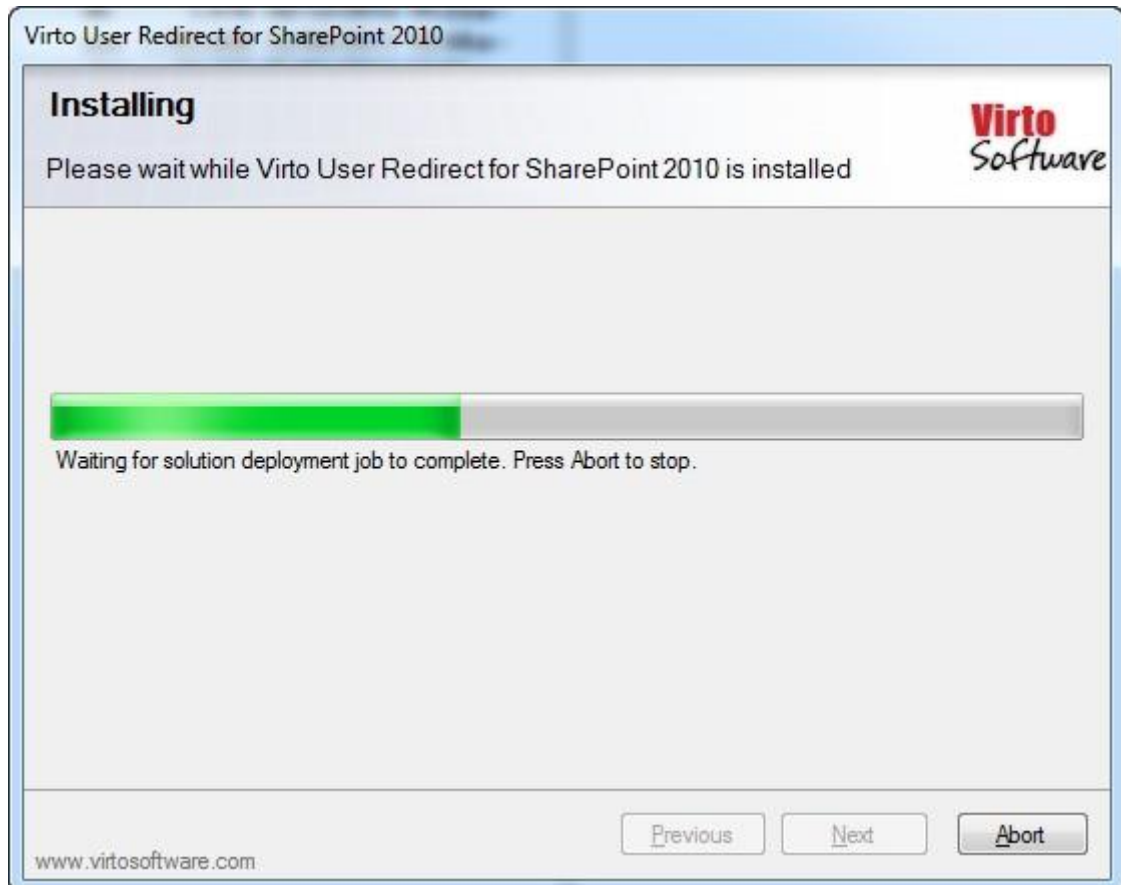


Check “I accept the terms in the License Agreement” and click “Next”. Select the web application(s) where you want to install the product.

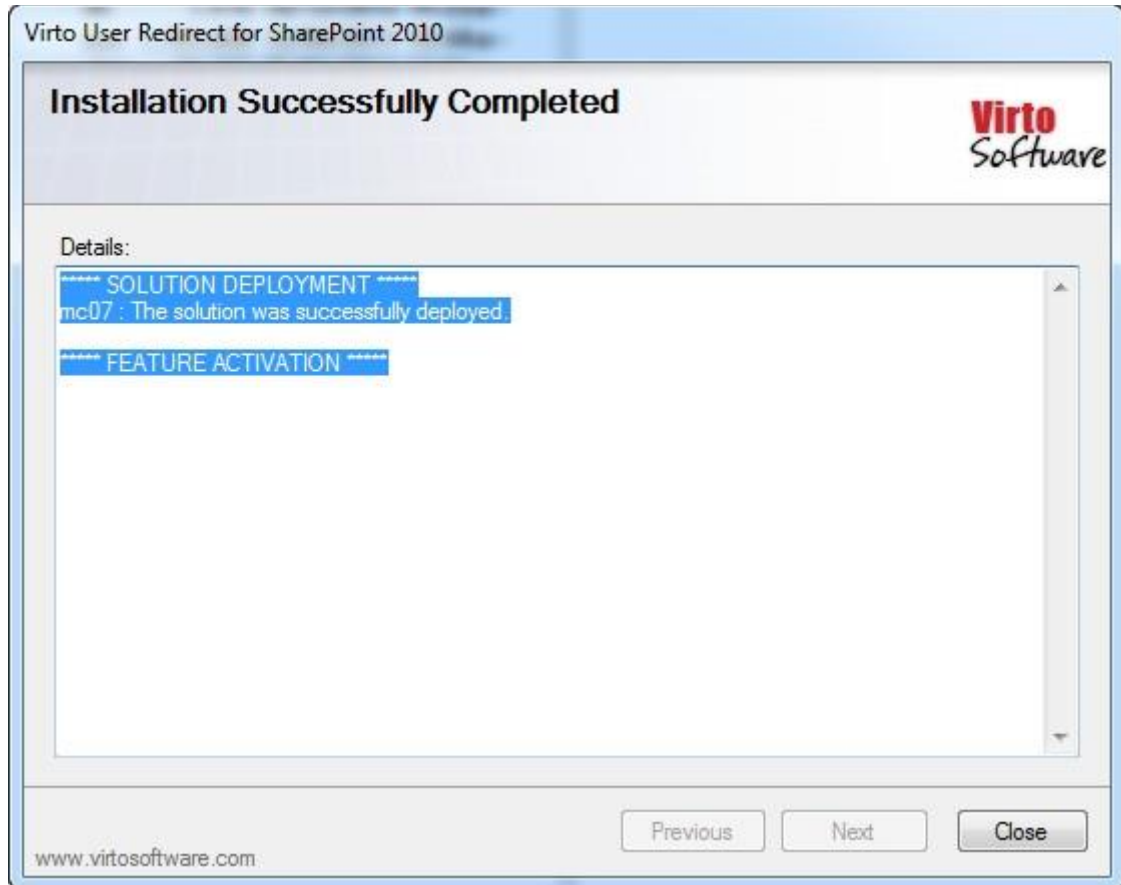
Warning: *You must be logged in to the SharePoint server with a Site Collection Administrator account to automatically activate this feature.*



Then click "Next".



Click “Close” to complete the installation.



License Activation

To see full instruction for successful activation of your component, please download “[Virtio License Manager](#)” PDF instruction from Downloads section of our site or read it in [Wiki](#).

Upgrading Virtio User Redirect

If you already use Virtio User Redirect and need to upgrade it to the latest version, download the.zip file from <http://www.virtosoftware.com>. Unzip the file and run setup.exe.

On the step 3 check the box “Upgrade” and click “Next”.

Note: if you had activated the license while installing the previous Virtio User Redirect version, you do not need to activate it now.

Uninstalling Virtio User Redirect

To uninstall the component:

1. Double click the Setup.exe extracted from downloaded **Virto.SharePoint.UserRedirect.zip** file.
2. The program performs the system checks again. Once that has successfully completed, the program prompts you to Repair or Remove the solution. Select Remove, and click "Next".



Virto User Redirect Adjustment and Usage


Virto User Redirect component is designed for managing users' access to SharePoint pages using redirection from restricted pages to allowed ones.





Virto User Redirect Rules

Users who are allowed to manage Virto User Redirect settings

Home Owners ; System Account ;

Type user/group names  

 Add new redirect rule

Source url	Users to redurect	Destination url	Redirect from	Redirect till	Enabled	
/SitePages/NotForAnonymous.aspx	Anonymous User	/SitePages/Home.aspx	9/17/2013 12:00:00 AM	9/24/2013 12:00:00 AM	No	 
/sites/site2/Test.aspx	Home Visitors; Anonymous User	/sites/site2/Home.aspx			Yes	 

Virto User Redirect Settings

To find User Redirect Settings on your SharePoint site, open SharePoint Menu "Site Actions\Site Settings". Then find section "Site Collection Administration" and click "Virto User Redirect Settings" link.



Look and Feel

- Welcome Page
- Title, description, and icon
- Master page
- Page layouts and site templates
- Tree view
- Site theme
- Navigation



Site Actions

- Manage site features
- Reset to site definition
- Delete this site
- Site Web Analytics reports
- Site Collection Web Analytics reports



Site Collection Administration

- Search settings
- Search scopes
- Search keywords
- FAST Search keywords
- FAST Search site promotion and demotion
- FAST Search user context
- Recycle bin
- Site collection features
- Site hierarchy
- Site collection navigation
- Site collection audit settings
- Audit log reports
- Portal site connection
- Site collection policies
- Site collection object cache
- Site collection cache profiles
- Content type publishing
- Site collection output cache
- Variations
- Variation labels
- Variation logs
- Translatable columns
- Suggested Content Browser Locations
- Visual Upgrade
- SharePoint Designer Settings
- Virto User Redirect Settings**
- Help settings

Users Allowed to Manage Virto User Redirect Settings

By default only site collection administrators are allowed to manage Virto User Redirect Settings. They can delegate managing rights to other users/SharePoint groups. Just select users/groups in people picker and click "Save" button.

Users who are allowed to manage Virto User Redirect settings

Home Owners ; System Account ;





Type user/group names



Save

Adding New Redirect Rule

To add new redirect rule click link "Add new redirect rule". Then fill in the form and click "Save" button.





Source relative or absolute url (examples: /mysite/MyPage.aspx or http://MySiteCollection/mysite2/mypage2.aspx) [Required]	/sites/site2/Test.aspx	
Redirect the following users/groups [Required]	Home_Visitors ;	
	Type user/group names	 
	<input checked="" type="checkbox"/> Including anonymous user	
Destination relative or absolute url [Required]	/sites/site2/Home.aspx	
Redirection is active from [Optional]	<input type="text"/>	 12 AM <input type="text"/> 00 <input type="text"/>
Redirection is active till [Optional]	<input type="text"/>	 12 AM <input type="text"/> 00 <input type="text"/>
	<input checked="" type="checkbox"/> Enabled	
<input type="button" value="Save"/> <input type="button" value="Cancel"/>		

Take into account that source urls "/SitePages/Test.aspx" and "/SitePages/Test.aspx?param=1" are different and you have to add redirect rules for each of them.

In case you want to make redirect working in all url zones (alternate access mappings in Central Admin), use relative source urls.

If you want to enable redirect in a single zone only, use absolute url.

You can add redirect for anonymous users only. Do not select users/groups in people picker and select check box "Including anonymous user".

Source relative or absolute url (examples: /mysite/MyPage.aspx or http://MySiteCollection/mysite2/mypage2.aspx) [Required]	/SitePages/NotForAnonymous.aspx	
Redirect the following users/groups [Required]		
	Type user/group names	 
	<input checked="" type="checkbox"/> Including anonymous user	
Destination relative or absolute url [Required]	/SitePages/Home.aspx	
Redirection is active from [Optional]	<input type="text" value="9/17/2013"/>	 12 AM <input type="text"/> 00 <input type="text"/>
Redirection is active till [Optional]	<input type="text" value="9/24/2013"/>	 12 AM <input type="text"/> 00 <input type="text"/>
	<input type="checkbox"/> Enabled	
<input type="button" value="Save"/> <input type="button" value="Cancel"/>		

Editing and Deleting Redirect Rules

Click "Edit/Delete" grid buttons in a table with redirect rules to make any modification with the rule or to remove it.

Version Release History

Release Date	Version	Description
10-12-2015	1.2.4	[-] Fixed user redirect for claims provider
07/15/2015	v.1.2.0	New license manager
09/23/2013	v.1.0.0	First Public Release