



**Virto Pivot View
for Microsoft SharePoint
Silverlight release 4.2.1
HTML 5 release 1.0.2**



User and Installation Guide

Table of Contents

SYSTEM/DEVELOPER REQUIREMENTS	4
OPERATING SYSTEM	4
SERVER	4
BROWSER.....	4
INSTALLATION AND ACTIVATION	5
INSTALLING VIRTO PIVOT VIEW	5
LICENSE ACTIVATION	8
UPGRADING VIRTO PIVOT VIEW	8
UNINSTALLING VIRTO PIVOT VIEW.....	9
ADMINISTRATION AND USAGE	10
ADDING WEB PART TO A SHAREPOINT SITE	10
VIRTO PIVOT VIEW SILVERLIGHT SETTINGS	12
<i>Creating Collection.....</i>	<i>13</i>
<i>Action settings.....</i>	<i>13</i>
<i>Defining Facet Categories</i>	<i>14</i>
<i>Data Source Settings</i>	<i>16</i>
SharePoint List.....	16
Background.....	18
Image	19
Text.....	21
User Directory	22
SQL table	23
Active Directory.....	25
Quick Data Source Wizard in SharePoint 2010	26
Toolbar Custom Action Button and Multiple Selection	27
Pivot View Cache Settings in SharePoint 2010	30
USING VIRTO PIVOT VIEW	31
VERSION RELEASE HISTORY	35
VIRTO SHAREPOINT HTML5 PIVOT VIEW SETTINGS	36
<i>Creating Pictures Collection</i>	<i>36</i>
<i>Data Source Settings of Virto SharePoint HTML5 Pivot View.....</i>	<i>39</i>
SharePoint List.....	39
Background.....	41
Image	42
Action	44
Text.....	46
User Directory	47
SQL table	48
Active Directory.....	49
USING VIRTO SHAREPOINT HTML5 PIVOT VIEW	51

Virto Pivot View for Microsoft SharePoint

Overview

Virto Pivot View is intended for visualization and convenient management of large amount of data in **Microsoft SharePoint 2007, 2010, 2013, and 2016**.

The component, which can be easily integrated as a web part into a SharePoint site, displays vast collections of data as sets of images and provides features for convenient browsing, filtering, sorting and grouping the data as well analyzing them for the presence of hidden patterns in very organic way. With Virto Pivot View, SharePoint users can easily deal with thousands of individual data items.

No matter what kind of data and how much of it you have to work with, Virto SharePoint Pivot View is a convenient tool for doing this efficiently. When you have to deal with a database of cars, people, photos or any collection where image of an item is important to make any kind of decision or comparison, Virto SharePoint Pivot View is a product that makes the work easier.

There is a number of Pivot View web parts for SharePoint on the market, including the one offered by Microsoft itself. Yet, to our knowledge Virto Pivot View is the only component that allows for using several distinct source of data to be displayed, while all of the available components support sources of just one type. The web part by Microsoft, for instance, supports only reports from SharePoint Reporting Services as the data source, while the product by Virtosoftware supports several types of them.

Features List

Feature	Version
Browsing data items represented by their images	v.1.0
Switching between grid or graph view	v.1.0
Zooming in and out	v.1.0
Getting lots of distinct charts and diagrams	v.1.0
Filtering out and bringing back data subsets	v.1.0
Sorting the data by different characteristics	v.1.0
Such a high level of visualization	v.1.0
SharePoint list, User Directory, Active Directory and SQL data base as data source	v.2.0
Special wizard for quick adding data sources	v.2.0

System/Developer Requirements

Operating System

Microsoft Windows Server 2003, 2008, 2012

Server

SharePoint Release 2013:

- Microsoft Windows SharePoint Foundation 2013 or Microsoft Office SharePoint Server 2013;
- Microsoft .NET Framework 4.5;

SharePoint Release 2010:

- Microsoft Windows SharePoint Foundation 2010 or Microsoft Office SharePoint Server 2010;
- Microsoft .NET Framework 3.5;

SharePoint Release 3:

- Microsoft Windows SharePoint Services v3 or Microsoft Office SharePoint Server 2007;
- Microsoft .NET Framework 3.5;

Note: *This product is not compatible with SPS 2003 and WSS v2.*

Browser

Microsoft Internet Explorer 7 or higher.

Installation and Activation

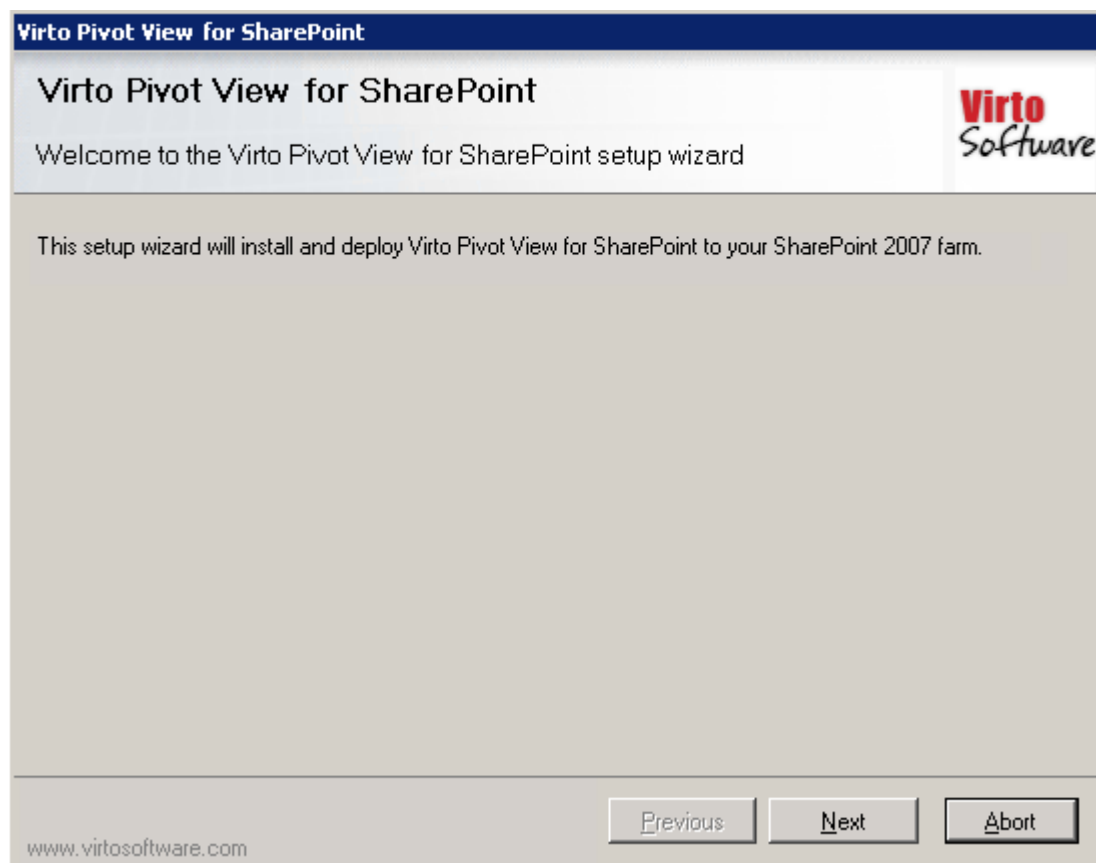
This section describes how to install, upgrade, uninstall, or contact Support for the Virto SharePoint Pivot View.

Installing Virto Pivot View

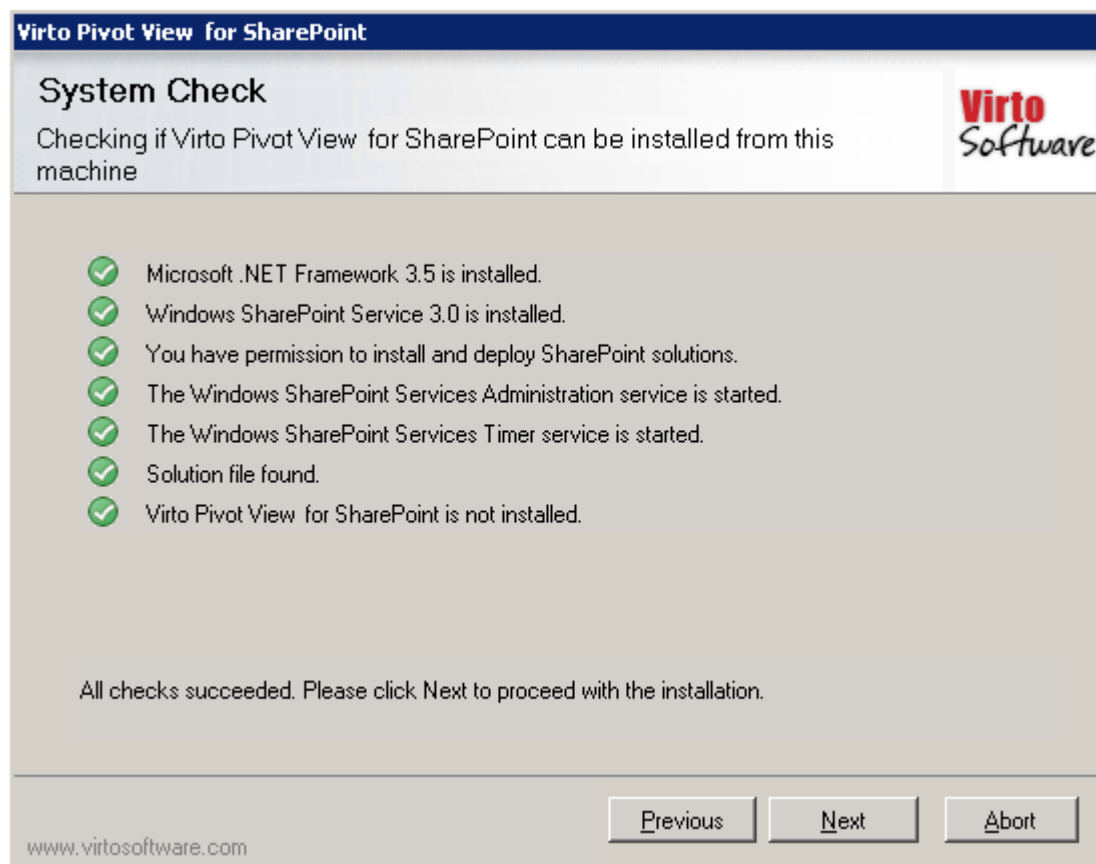
Before you begin, you need to make sure you have access to the server and your account must have the appropriate administrative privileges to install applications.

To access Virto SharePoint Pivot View Setup program download **Virto.SharePoint.PivotView.X.X.zip** file and unzip it. Run extracted **Setup.exe** file.

The setup wizard window will appear.



Virto Pivot View wizard performs a system check prior to the installation. All the system checks must be completed successfully in order to proceed with the installation. After the checks have been completed, click "Next".

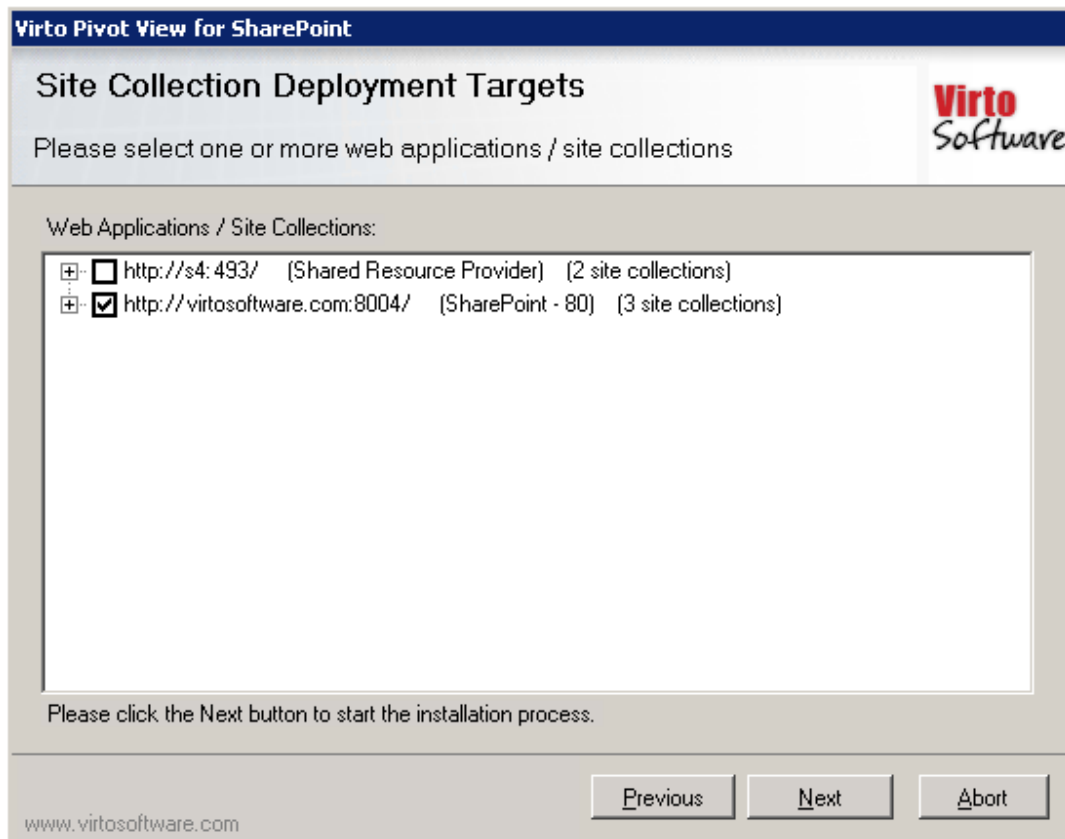


Check "I accept the terms in the License Agreement" and click "Next".

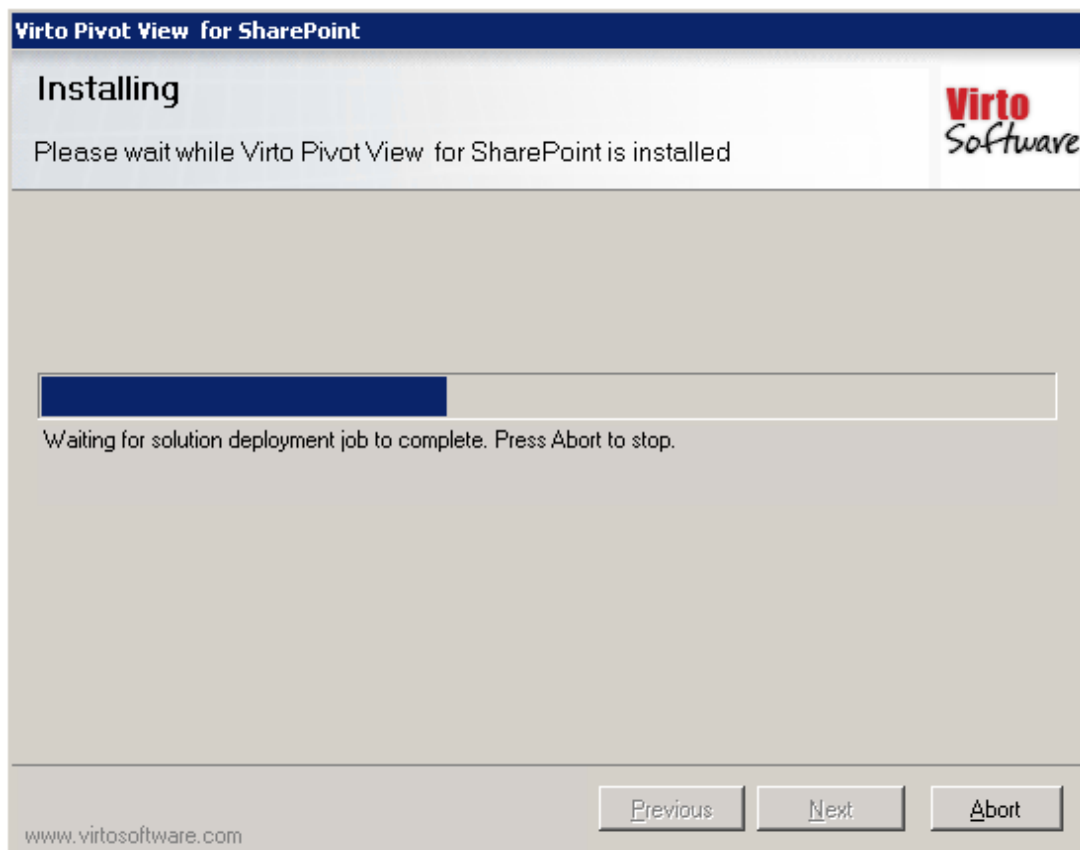


Select the web application(s) where you want to install the product.

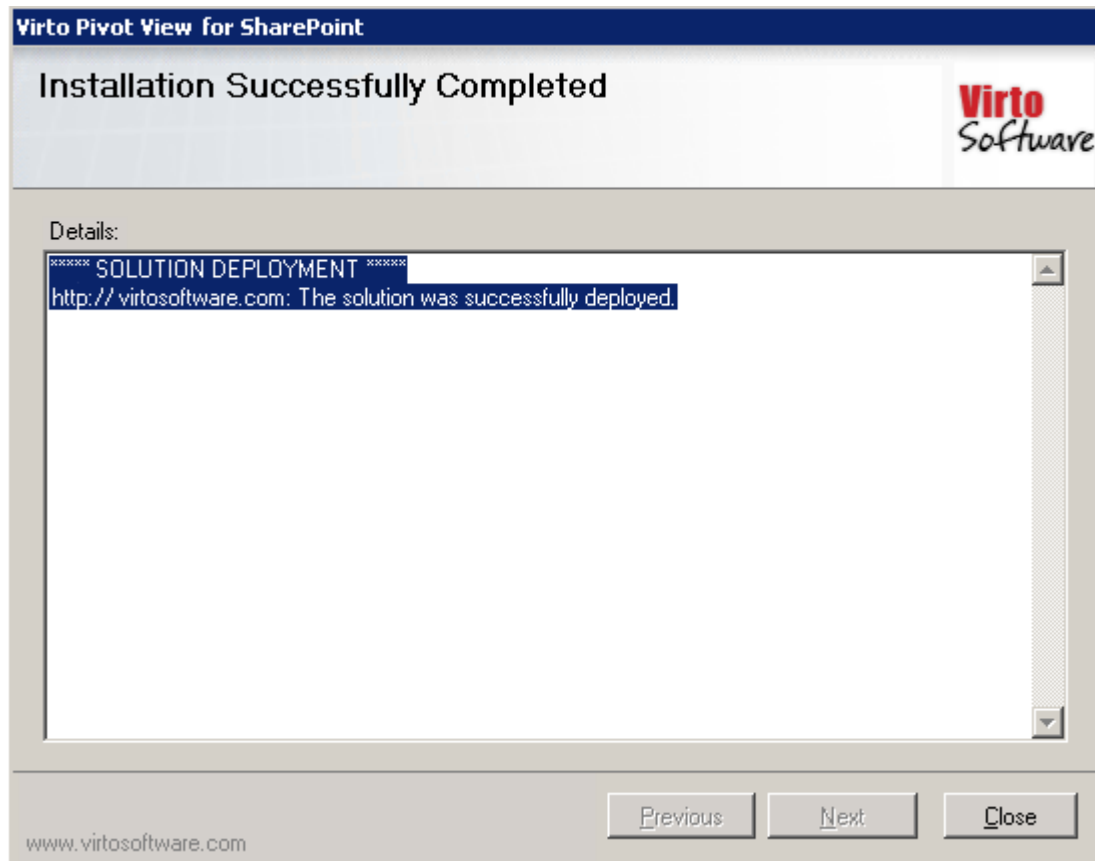
Warning: You must be logged in to the SharePoint server with a Site Collection Administrator account to automatically activate this feature.



Then click "Next".



Click “Close” to complete the installation.



Note: installation procedure is similar for SharePoint 2007, 2010, 2013 and 2016 versions.

License Activation

To see full instruction for successful activation of your component, please download “Virto License Manager” PDF instruction from [Downloads](#) section of our site or read it in [Wiki](#).

Upgrading Virto Pivot View

If you already use Virto SharePoint Pivot View and need to upgrade it to the latest version, download the latest version of web part in the.zip file from <http://www.virtosoftware.com>. Unzip the file and run setup.exe as it is described in the *Installing Virto Pivot View* section.

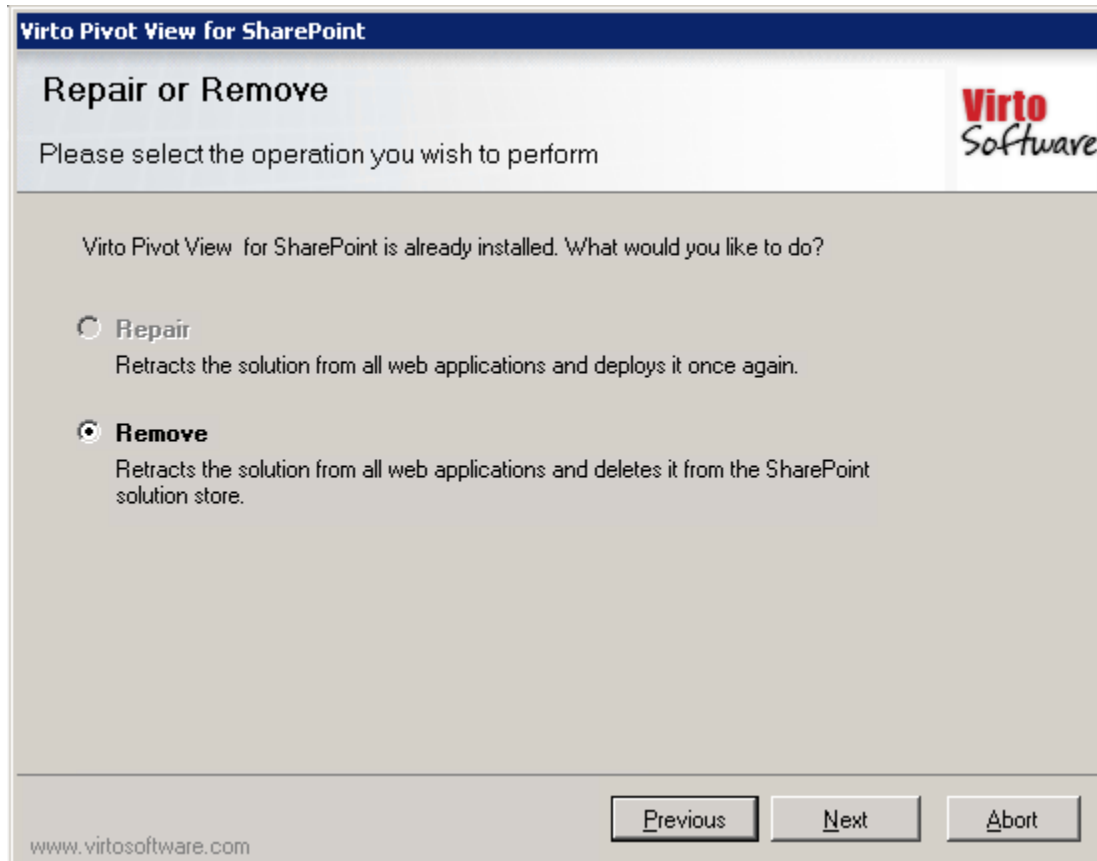
On the step 3 check the box “Upgrade” and click “Next”.

Note: if you had activated the license while installing the previous Virto SharePoint Pivot View version, you do not need to activate it now.

Uninstalling Virto Pivot View

To uninstall the component:

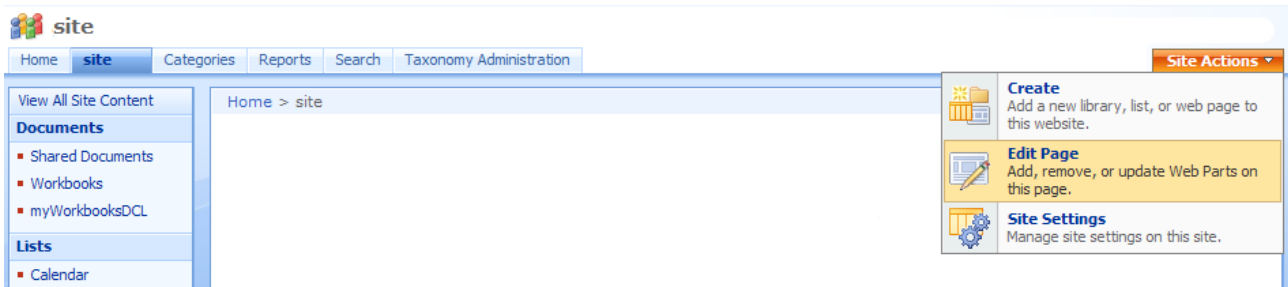
1. Double click the Setup.exe extracted from downloaded **Virto.SharePoint.PivotView.X.X.zip** file.
2. The program performs the system checks again. Once that has successfully completed, the program prompts you to Repair or Remove the solution. Select Remove, and click "Next".



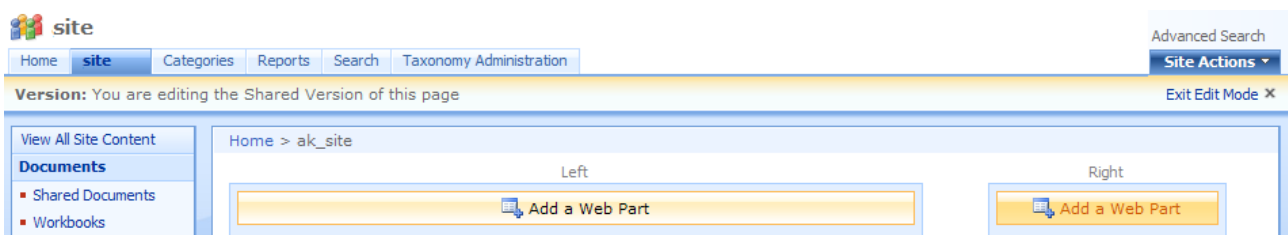
Administration and Usage

Adding Web Part to a SharePoint site

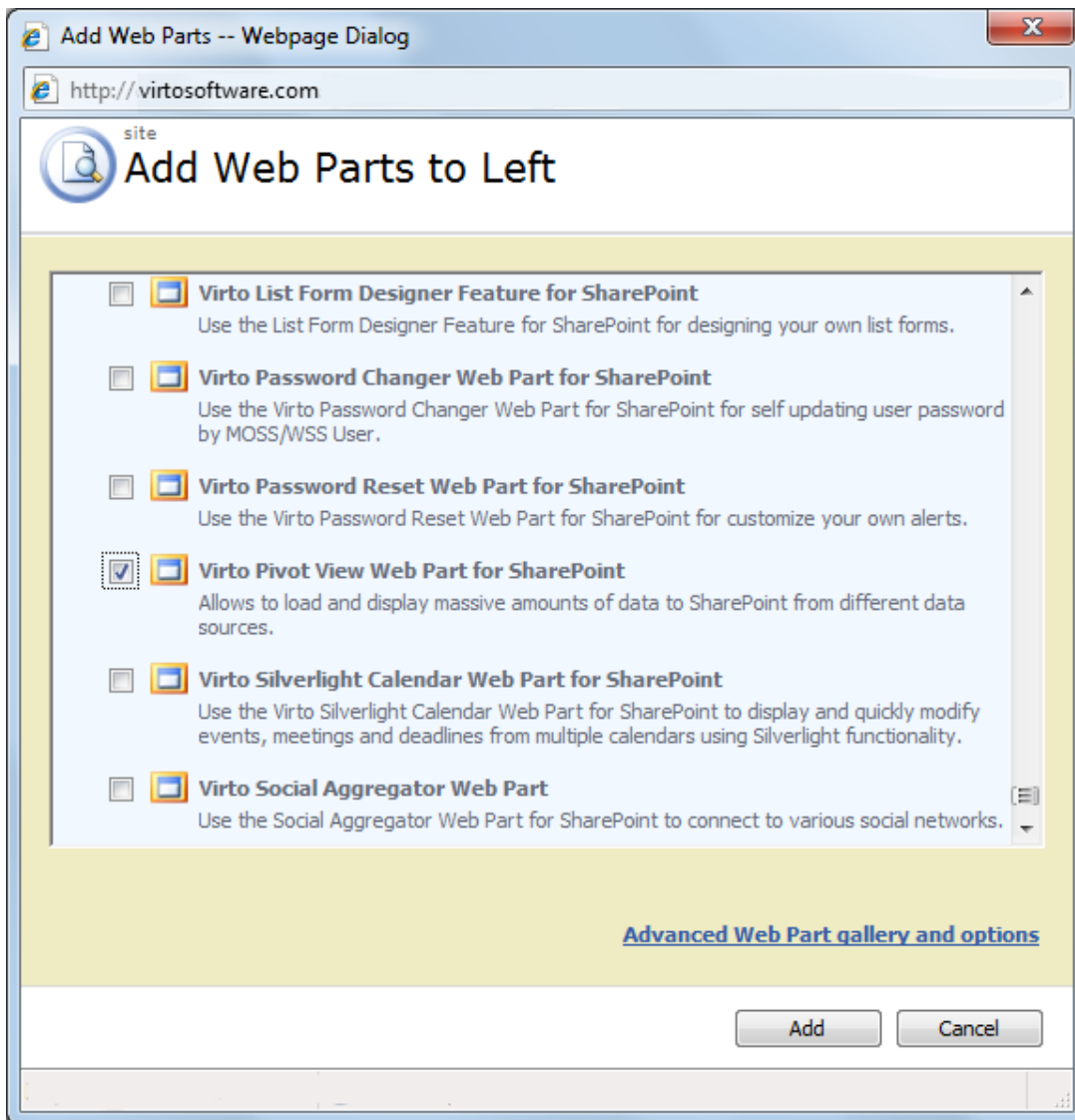
Go to SharePoint site where you want to add the web part and open “Site Actions - Edit page”. You will switch to edit mode.



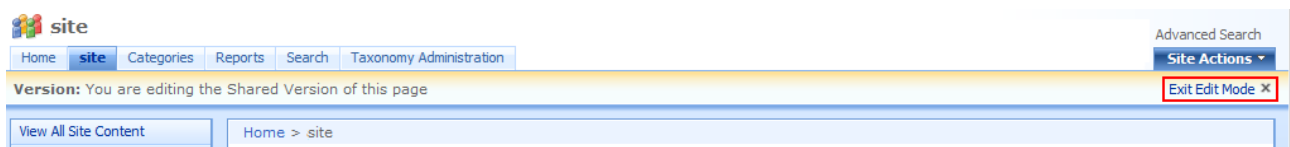
Click “Add a Web Part”.



Select Virto Pivot View at the bottom of the list and click “Add”.

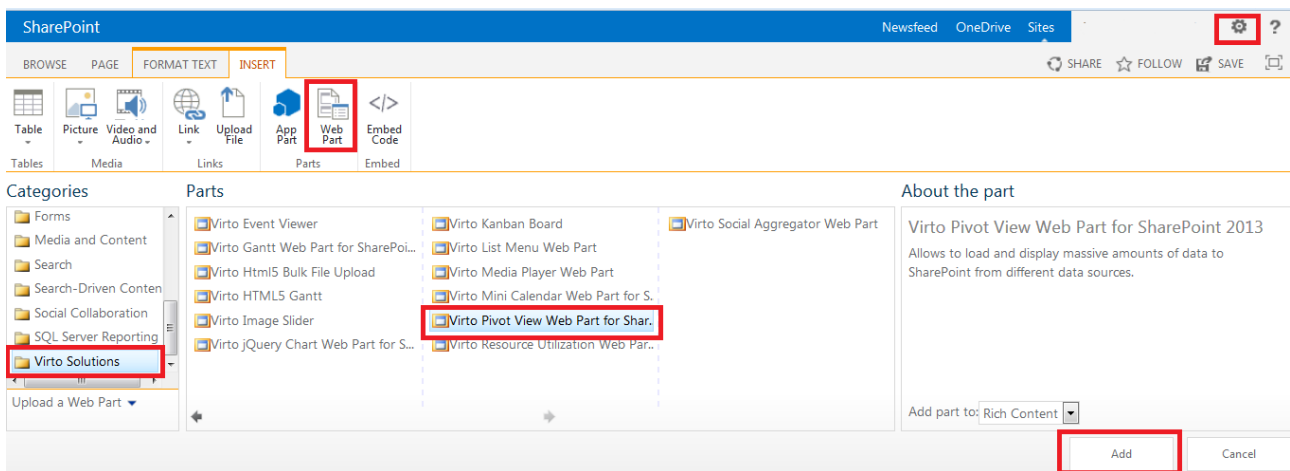


Once you have clicked “Add” button, use “Exit edit mode” button.



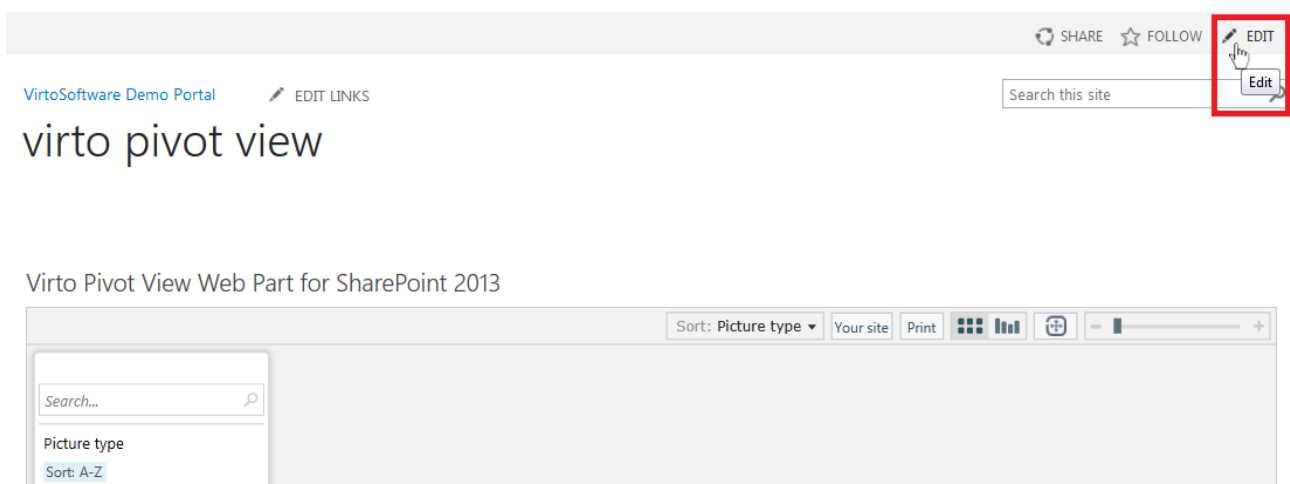
Added web part will be displayed on page. To adjust it, go to web part settings.

In more recent versions of SharePoint choose “Edit” on a page, then select “Insert” button on the ribbon and add “Virto Pivot View” Web Part from the list.



Virto Pivot View Silverlight Settings

To adjust Virto Pivot View go to “Edit” block.



You need to create a collection, define a data source that it will take data from, define settings of facet categories and then use available features to view the collection.

A collection for the Pivot consists of CXML and a corresponding image asset collection. The CXML begins with a top-level container called **Collection**. Collection contains top-level properties and elements, which pertain to the entire set of items contained within the collection.

The **FacetCategories** section is a child of the **Collection** node. For each facet attached to an item, a corresponding facet category must exist. Here, the name of the facet, the type, a format string, and various visibility options can be set. The type field can be *Number*, *String*, *LongString*, *DateTime*, or *Link*.

Another child of collection is the **Items** node. Because this is where each individual item in the collection is defined, this node usually contains the majority of the information in the file. Each item can have properties such as a double-click action link, *Href*; a name, *Name*; a description, *Description*; an id, *Id*; an image asset, *Img*; or any number of custom properties declared in the *Facets* section.

Creating Collection

For instance, you need to create a collection of pokemons. Click “Edit web part” and enter title of your collection. You can define brand image URL to be displayed on the Pivot View page.

Action settings

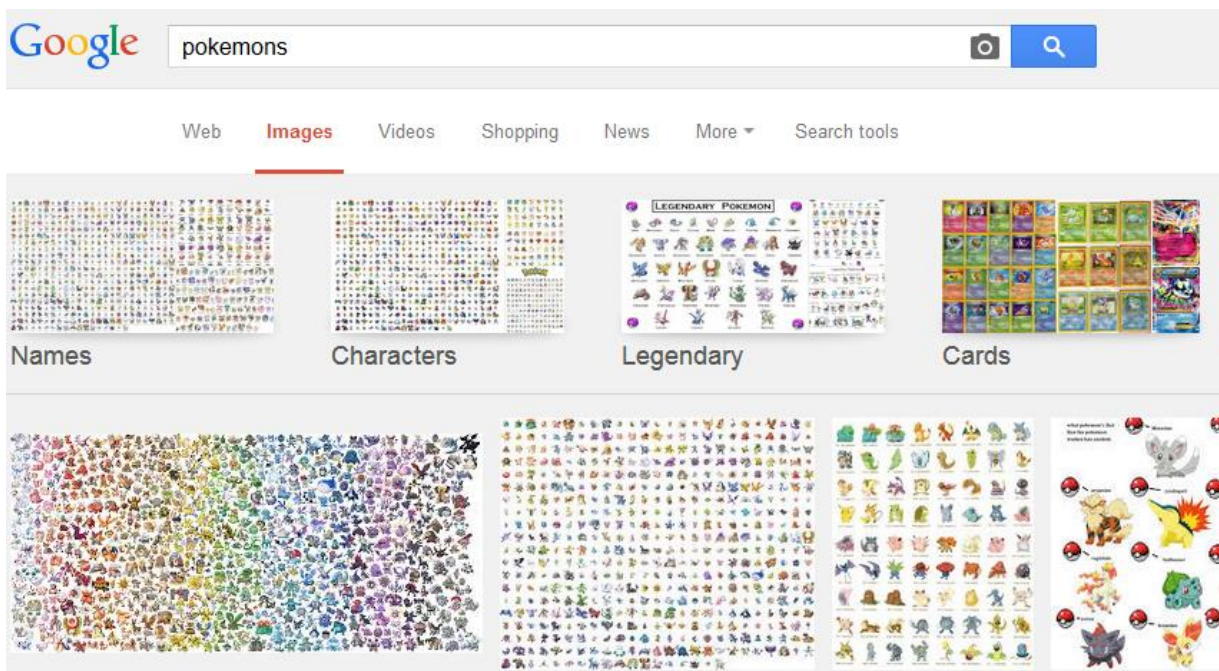
In case you need to add a special button, that leads to a site or list item, you can enable “Action” block. Check the box “Enable Action” in the settings block, type name of the button and enter the text of note that will be displayed when placing cursor on the button. Click “OK” or “Apply” to save the settings.

To define a site or field that will be displayed when using this button, go to data source settings, expand “Action” block and define where button should lead. Click “Save”.

Note: fields support active keys {SiteUrl}, {WebUrl}, {ListUrl}, {ItemUrl}, {FieldName}.

As a result, button will be displayed for an item when hovering the mouse point on it and the redirect link will be opened in a new window after clicking on it. It is the link to Google search results in our case.

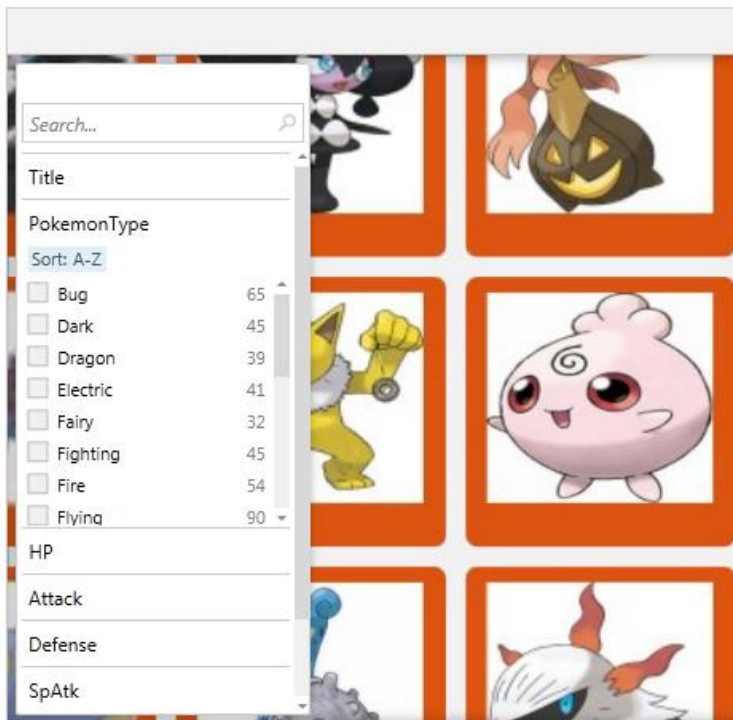
Virto Pivot View Web Part for SharePoint 2013



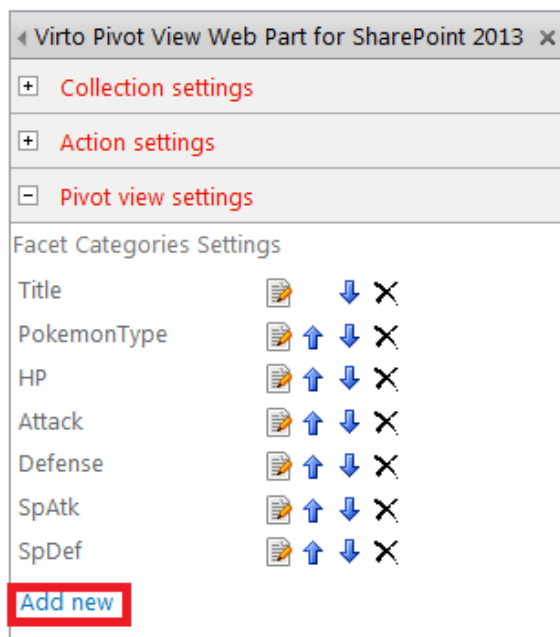
Defining Facet Categories

Facet categories contain settings of categories that will be used for Pivot View. By defining face categories, you define possible ways of sorting collection items.

Virto Pivot View Web Part for SharePoint 2013



Click "Add new" in the "Facet Categories settings" block.



Enter name of facet category. Select type (the type field can be *Number*, *String*, *LongString*, *DateTime*, or *Link*.) Click "Save" to save the settings.

SpAtk

SpDef

[Add new](#)

Name
Speed

Type
Number ▼

Format

☒ Is Word Wheel Visible

☒ Is Meta Data Visible

☒ Is Filter Visible

Save Cancel

This way you can facet categories and use them for sorting in your Pivot View. Use arrows on the right to define order of facet categories.

Pivot view settings

Facet Categories Settings

Title

PokemonType

HP

Attack

Defense

SpAtk

SpDef

Speed

[Add new](#)

When you have adjusted facet categories, move to the “Data source setting” section in order to map facet categories with existing list fields.

Data Source Settings


SharePoint List

Go to “Data source settings” block and click “Add new”. Select SharePoint list as a data source.

Data sources settings

[Add new](#)

Type data source name and select SharePoint site that contains the required list. You can also select a specific list view (including custom views) to display items.

Data source	
Sharepoint List	▼
Name	
PokemonsData	
Site	
http://demo2013.virtos.com	
List	
PokemonsData	▼
View	
[Not set]	▼

Now match fields of **facet categories** and SharePoint **list fields** in “Mapping fields” block.

Note: “Name” field is required.

Mapping fields	
Name	Name ▼
Description	ID ▼
Title	Title ▼
PokemonType	PokemonType ▼
HP	HP ▼
Attack	Attack ▼
Defense	Defense ▼
SpAtk	SpAtk ▼
SpDef	SpDef ▼
Speed	Speed ▼

Then you need do define image settings for Pivot View. Define width and height of images (in pixels).

Image Settings	
Image Max Size (px.)	
Width	512
Height	512

For example, the left picture has 512x512 px size, and the picture from another data source on the right has 300x300 px size.



Note: page load time depends on image size. Do not define too large size for images in the Pivot View.

Note: free version of Virto Pivot View allows up to **300** items in the list

Then move to **image settings** block and define parameters of displayed images.

Background

Expand “**Background**” block. Define border style (“None”, “Rectangle” or “Rounded”), border and background color.

☒ Background

Border Style

☐ None

☐ Rectangle

☒ Rounded

Border Color

R: G: B:

Background Image Url

Background Color

R: G: B:

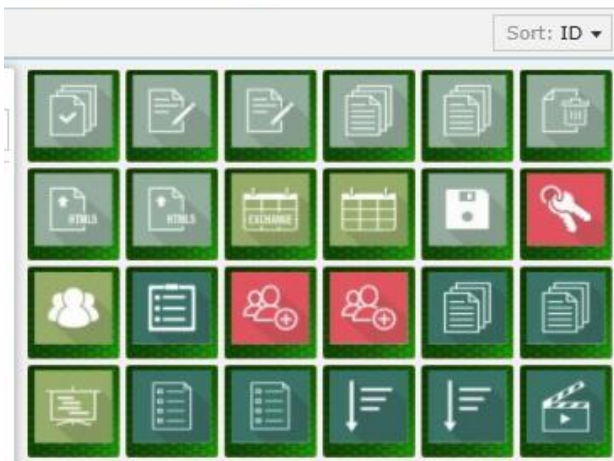
Or you can define a picture as a background. Type background image URL.

Background Image Url

<http://www.virtosoftware.com/>

For example, you can apply a custom background.

Part for SharePoint 2013



Image

Expand “Image” block, define image background color and image URL key.

Image

Image Url

{ImageUrl}

Note: fields support active keys {SiteUrl} {WebUrl} {ListUrl}
{ImageUrl} {ThumbnailUrl} and {FieldName}.

Image Background Color



R: 255 G: 255 B: 255

Image Offset

Left	40
Top	30
Right	40
Bottom	80

The background color is applied to pictures with transparency.

Item URL is usually used to display items from a picture library. But you can also use list, web, or site URLs instead of items URL.

In the following example, the offset size of borders is 10 px for each side.



Text

Expand “Text” block. Choose field from which text for images will be taken. Define text color.

Image Offset

Left	10
Top	10
Right	10
Bottom	40

☒ Action

☐ Text

Title Field

Title ▼

Text Color

Font Size 16



R: 255 G: 255 B: 255

The left picture has the bottom offset 40 px and the white text from the field “Title” displayed.



When you define all settings for the new data source click “Save”. To save all the settings click “OK” or “Apply”.

Image Settings

Image Max Size (px.)

Width

Height

☐ Background

☐ Image

☐ Action

☐ Text

User Directory

Go to “Data source settings” block and click “Add new”. Select user directory as a data source.

Add new

Data source

User Directory ▼

Define name of user directory, enter site url. Now match fields of **facet categories** and user directory **fields** in “Mapping fields” block.

Name

Site
 

Mapping fields

Name	<input type="text" value="Name"/>
Description	<input type="text" value="Department"/>
Title	<input type="text" value="Title"/>

Note: “Name” field is required.

Then you need to define image settings for Pivot View. Define width and height of images (in pixels).

Image Settings

Image Max Size (px.)

Width	<input type="text" value="512"/>
Height	<input type="text" value="512"/>

Note: page load time depends on image size. Do not define too large size for images in the Pivot View.


Note: free version of Virto Pivot View allows up to **300** items in the list

Then go to **image settings** block and define parameters of displayed images. The settings can be customized in the same way as it is described in “SharePoint list” chapter.

SQL table

Go to “Data source settings” block and click “Add new”. Select SQL table as a data source.

Data source



Define name of SQL table. Check the box “Use trusted connection” if you need. Connect to SQL server by entering user name and password. Click “Connect”.

Data source

Sql Source ▼

Name

SQLSource

☐ Use Trusted Connection (Only for Databases on this SharePoint Server)

SQL Server

MC06\SQLEXPRESS

User Name

admin

Password

●●●●●●●●●●●●●●●●

Connect

Then define database name, SQL table name and select primary key field.

Database Name

PivotTest ▼

Table Name

HeadTable ▼

Select primary key field

Name ▼

Now match fields of SQL source and facet categories in “Mapping fields” block.

Mapping fields

Name Name ▼

Description Department ▼

Note: “Name” field is required.

Then you need do define image settings for Pivot View. Define width and height of images (in pixels).

Image Settings

Image Max Size (px.)

Width	512
Height	512

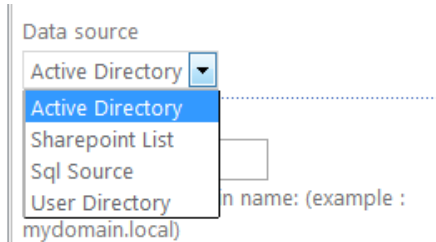
Note: page load time depends on image size. Do not define too large size for images in the Pivot View.

Note: free version of Virto Pivot View allows up to **300** items in the list

Then go to **image settings** block and define parameters of displayed images. The settings can be customized in the same way as it is described in “SharePoint list” chapter.

Active Directory

Go to “Data source settings” block and click “Add new”. Select active directory as a data source.



Data source

Active Directory ▼

Active Directory

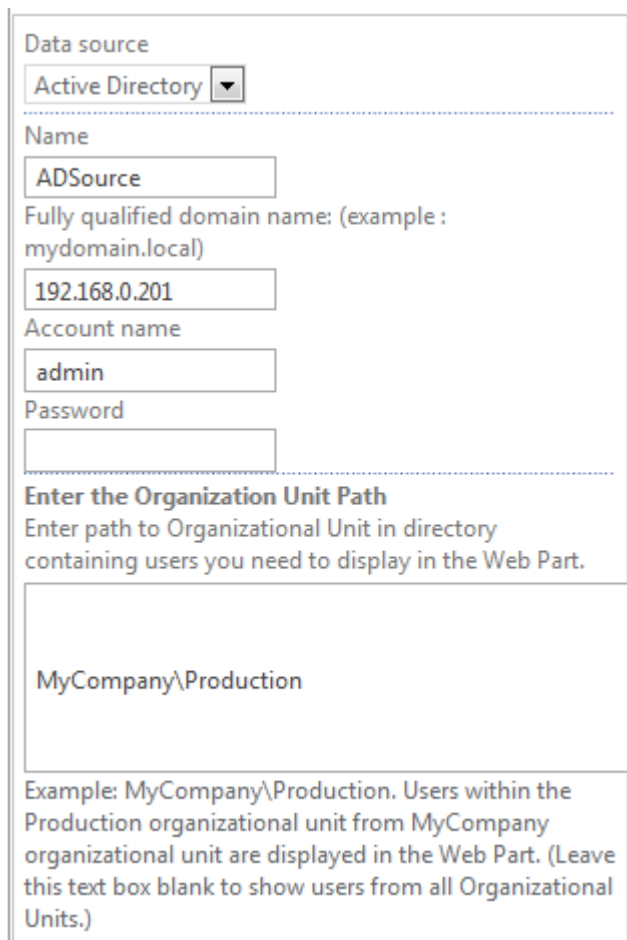
Sharepoint List

Sql Source

User Directory

mydomain.local)

Define name of active directory source. Enter fully qualified domain name, account name and password. Enter the organization unit path in case you need to display items from a certain organizational unit.



Data source

Active Directory ▼

Name

ADSource

Fully qualified domain name: (example : mydomain.local)

192.168.0.201

Account name

admin

Password

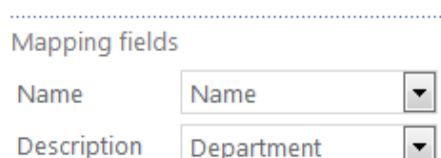
Enter the Organization Unit Path

Enter path to Organizational Unit in directory containing users you need to display in the Web Part.

MyCompany\Production

Example: MyCompany\Production. Users within the Production organizational unit from MyCompany organizational unit are displayed in the Web Part. (Leave this text box blank to show users from all Organizational Units.)

Now match fields of active directory and facet categories in “Mapping fields” section.



Mapping fields

Name Name ▼

Description Department ▼

Note: “Name” field is required.

Then you need to define image settings for Pivot View. Define width and height of images (in pixels).

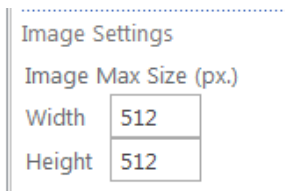


Image Settings	
Image Max Size (px.)	
Width	512
Height	512

Note: page load time depends on image size. Do not define too large size for images in the Pivot View.

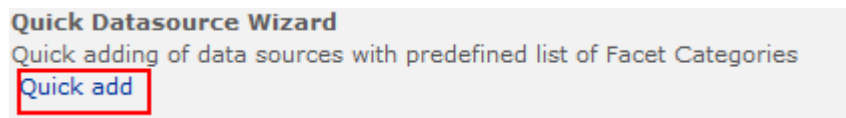
Note: free version of Virto Pivot View allows up to **300** items in the list

Then move to **image settings** block and define parameters of displayed images.

Then go to **image settings** block and define parameters of displayed images. The settings can be customized in the same way as it is described in “SharePoint list” chapter.

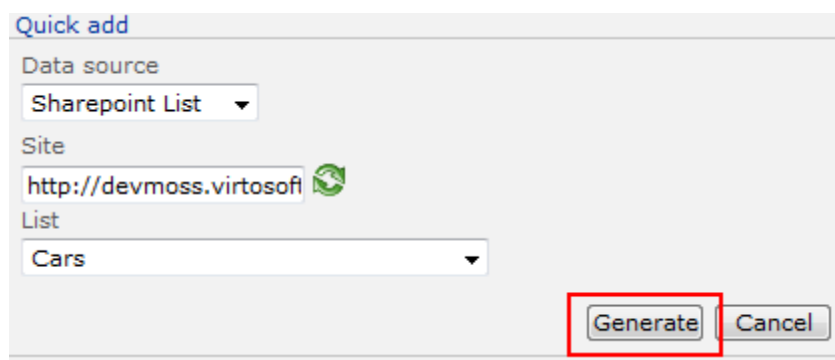
Quick Data Source Wizard in SharePoint 2010

In case you haven’t added any data source yet and need to do it quickly, use “Quick Add” button in “Quick add data source wizard” block.



Quick Datasource Wizard
Quick adding of data sources with predefined list of Facet Categories
Quick add

Then select data source (for instance, a SharePoint list), define site and list, then click “Generate”.



Quick add

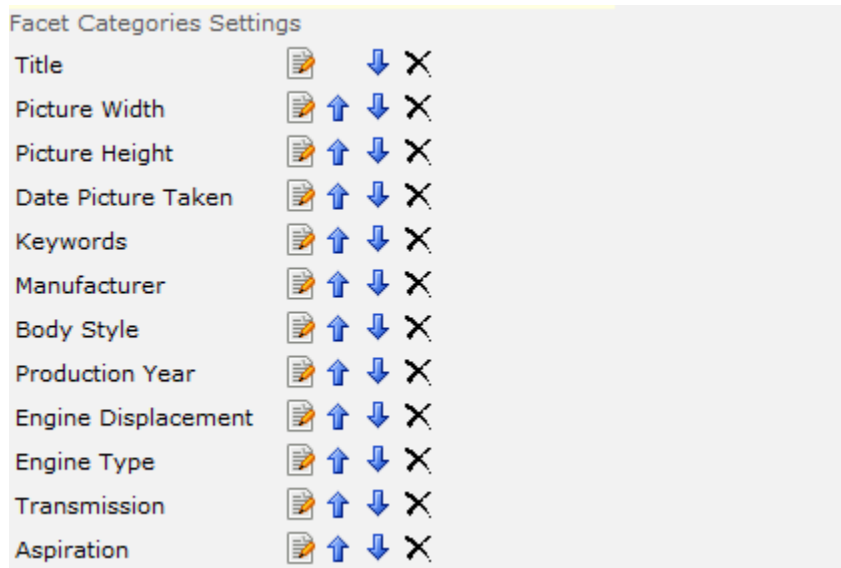
Data source
Sharepoint List ▼

Site
http://devmoss.virtosoft

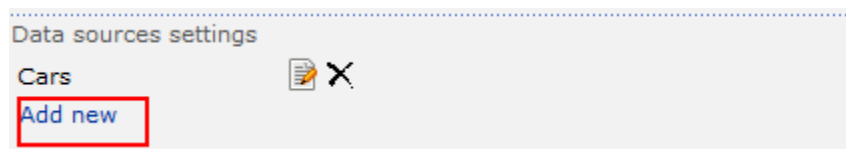
List
Cars ▼

Generate Cancel

The list of facet categories will be generated automatically (mapping will be performed automatically as well) so you have no need to map fields manually.

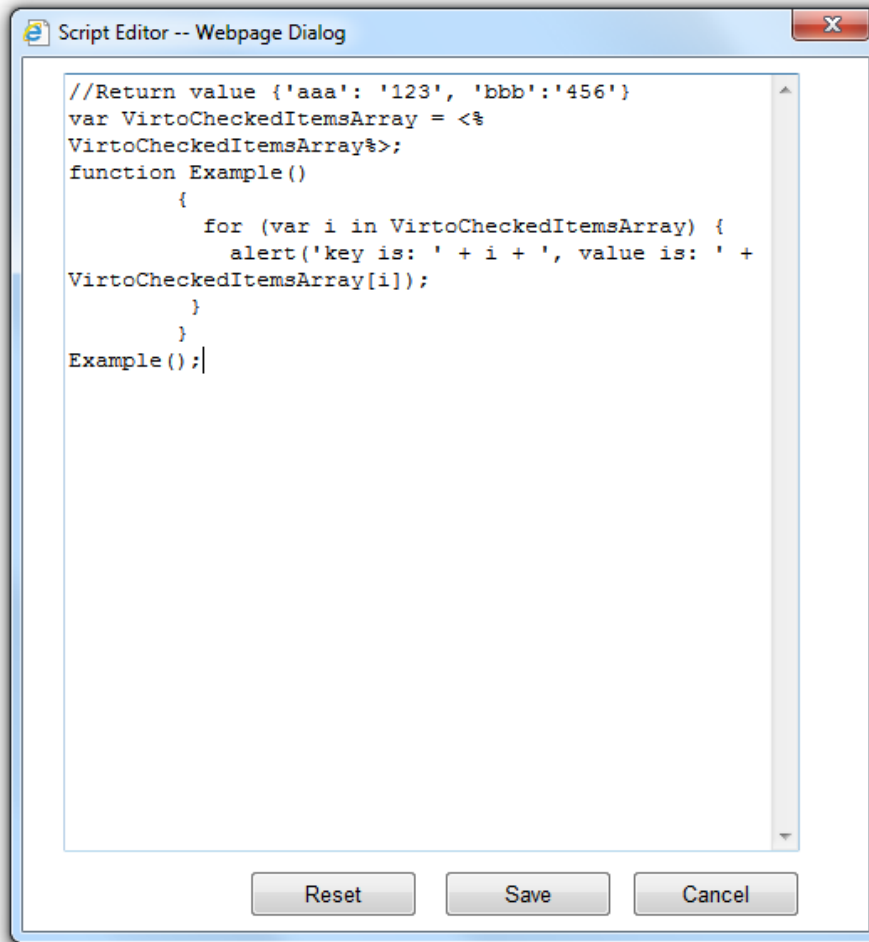


Click “Add new” to add more data sources as it is described in previous sections.



Toolbar Custom Action Button and Multiple Selection

In order to add toolbar button, select checkbox **Show toolbar action button**. Enter button text and define image Url.



Toolbar Custom Action

☒ Show toolbar action button

Action Name

Click Me

Icon Url

<https://www.virtosoftware.co>

Action Type

☒ Action Url

<https://www.virtosoftware.com>

☐ Action Script

Script...

☒ Enable multiple selection

Item Key

ID

Item Value

Name

Action

Check item

Description

Default view

☒ Grid ☐ Graph

Toolbar Custom Action

☒ Show toolbar action button

Action Name

ClickMe!

Icon Url

Action Type

☐ Action Url

<http://virtosoftware.com>

☒ Action Script

Script...

☒ Enable multiple selection

Item Key

ID

Item Value

Description

Action

Check item

Description

ToolTip

Select **Action Url** action type for the button in order to set redirect to defined Url after click on the button. Or use **ActionScript** to run JavaScript code.

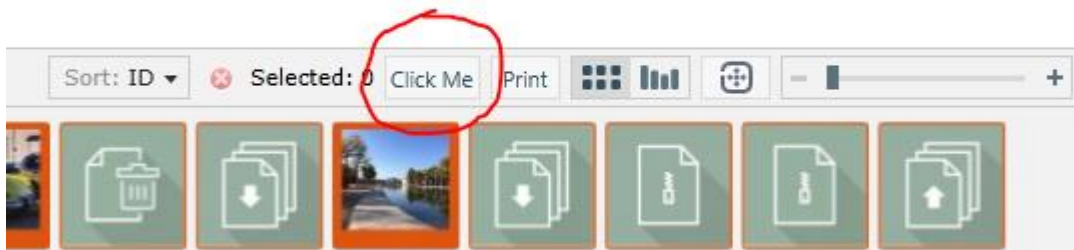
In case Action Script is selected, use **Script...** button to enter JavaScript code.

Script usage sample code will be entered in the displayed window by default.

Value `<%VirtocommerceItemsArray%>` will be replaced with mass that contains keys and values of selected items. In order return the default code, use **Reset** button.

Click **Save** when you have entered your code. Or use **Cancel** to cancel operation and close enter script editor window.

The button will appear on the web part's toolbar.



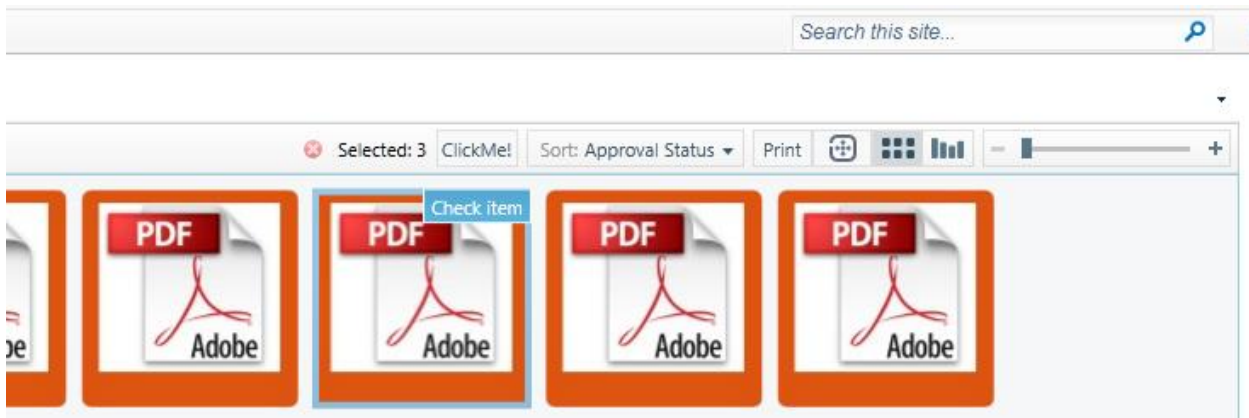
To allow multiple selection of items, use checkbox **Enable multiple selection**.

Select **facet category** that will be used as a key and **facet category** that will be used as a value. These keys and values can be used in JavaScript code.

Every item will have a button that will make this item **checked after** clicking it (or **unchecked**, in case of second click).

The text of button has to be entered in the **Action** field. Tooltip can be entered in **Description** field. Tooltip will be displayed when pointing mouse on the button.

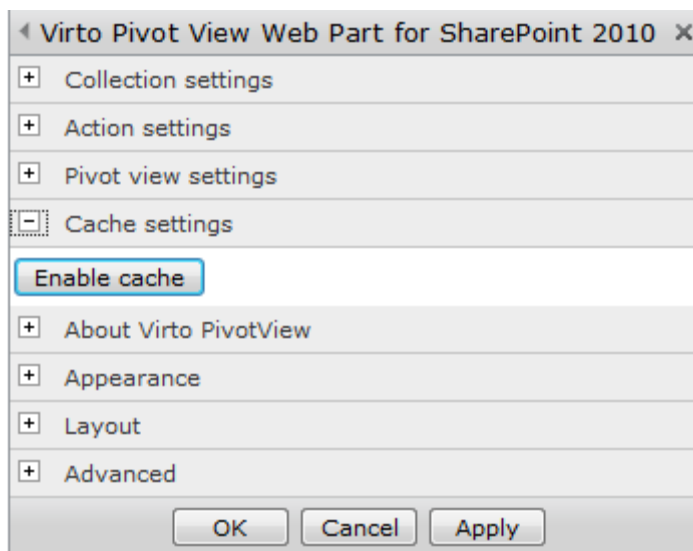
The quantity of selected items is shown on the toolbar.



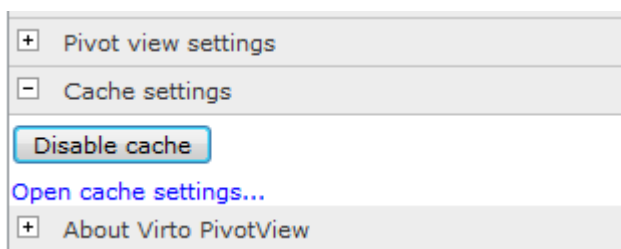
In order to cancel the selection of items, use button (red X icon) opposite Selected:.

Pivot View Cache Settings in SharePoint 2010

Caching is set separately for every added Virto SharePoint PivotView web part. To activate caching open web part settings block and use “Enable cache” button in the Cache settings.



By default caching is done in a half an hour after clicking the button and then daily the same time. To define cache settings use **Open cache settings...** link. When you follow the link, settings window will open and you will be able to define cache schedule there.



When cache schedule settings are defined, click OK (or Cancel to cancel changes). You will see the page with a list of web parts with cache settings defined. With help of Enable/Disable buttons you can enable or disable caching. When you use Delete button, cache is enabled and cleaned.

Virto SharePoint PivotView Cache Settings

I Like It Tags & Notes

Search this site...

Web Part Page Url

Web Part Id

Cache Timer Settings
 Daily
 Start: 7/15/2011 4 PM 09
 Recur every: 1 days

OK Cancel

Refresh	Enable	Disable	Delete						
Web Part Title	Web Part Id	Web Part Page Url	Cache Status	Next Runtime	Last Runtime	Result			
<input checked="" type="checkbox"/> Virto Pivot View Web Part for SharePoint 2010	g_7e42a7c3_f516_4f0d_902f_b2e5381f53aa	http://c06/SitePages/PivotView%203.0.aspx	Ready	15.07.2011 16:09:00	15.07.2011 15:05:32	Success			

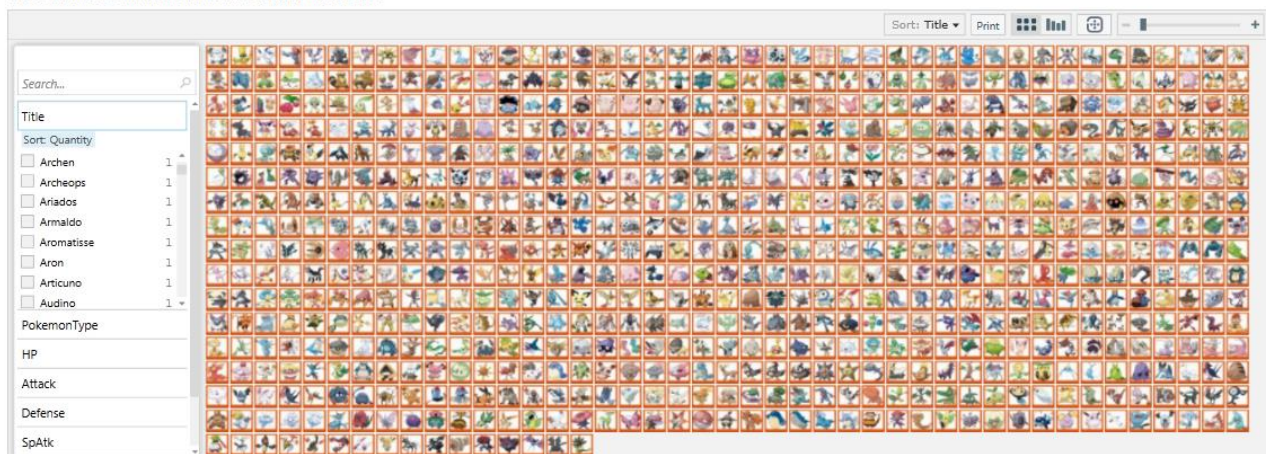
To cancel caching you can also use Disable cache button in the Cache settings section of web part settings (the button will be visible only if cache is activated).

Caching is made by OWSTimer service. If cache is active but there are no images generated for it or images are being created, data will be generated dynamically by opening web part page.

Using Virto Pivot View

Go to Virto Pivot View page.

Virto Pivot View Web Part for SharePoint 2013



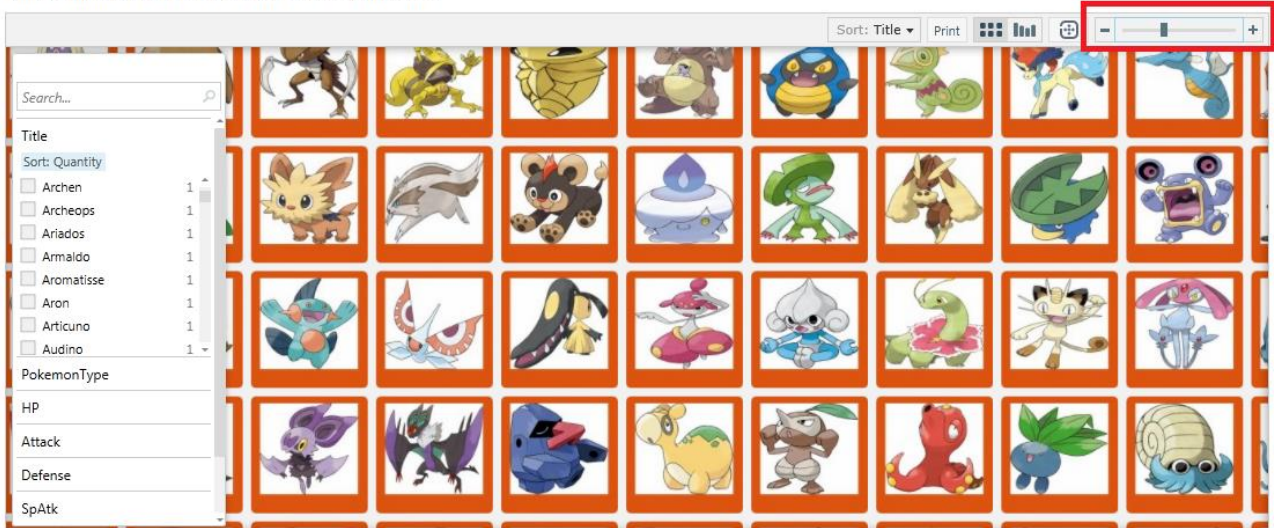
You can view items in grid view or graph view.

Virto Pivot View Web Part for SharePoint 2013

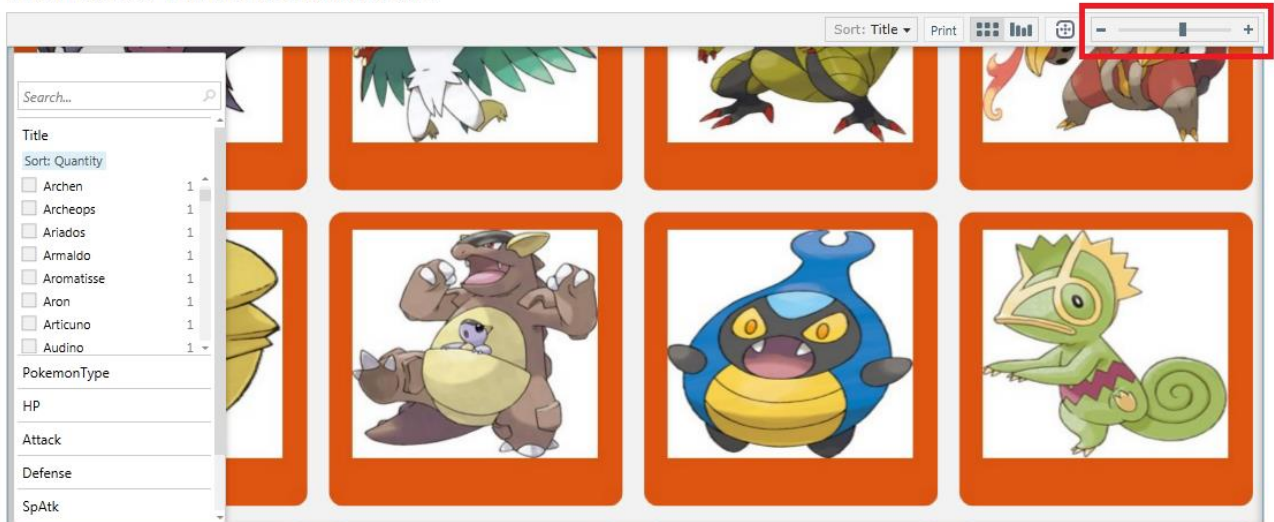


Zoom items to see more detailed information.

Virto Pivot View Web Part for SharePoint 2013

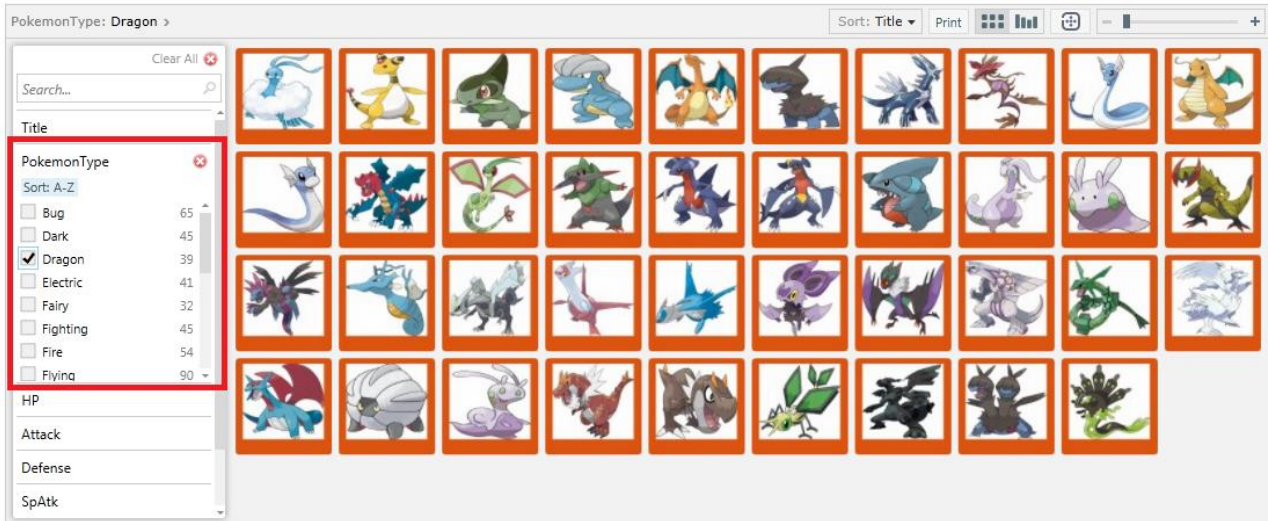


Virto Pivot View Web Part for SharePoint 2013



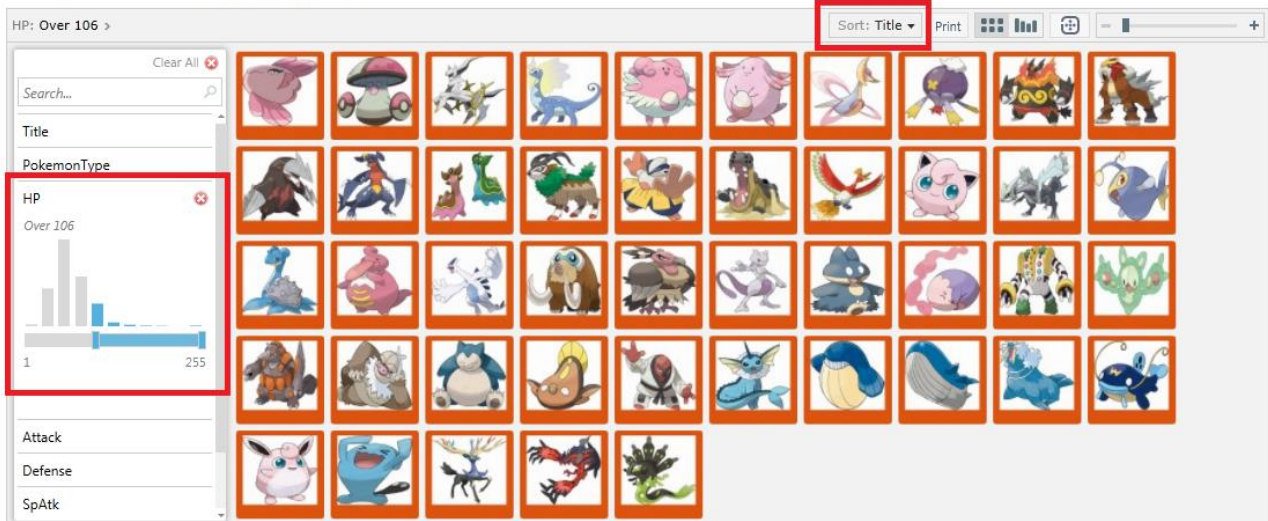
Use facet categories on the left side to sort collection and display required items.

Virto Pivot View Web Part for SharePoint 2013



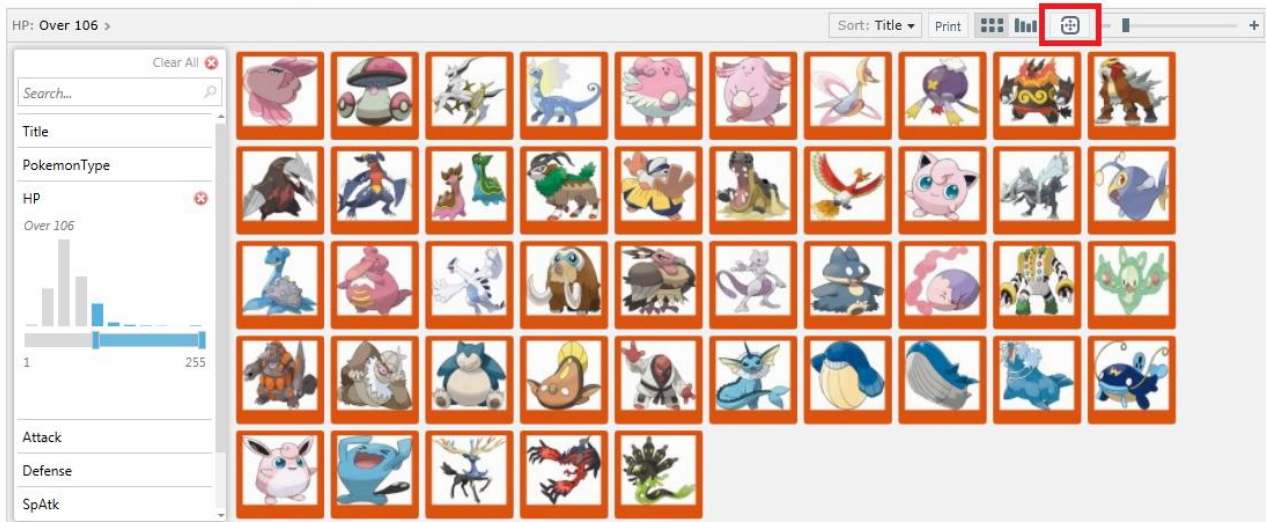
You can use two levels of filtering and display required characteristics of Pivot View items.

Virto Pivot View Web Part for SharePoint 2013



You can use full screen mode when viewing the data. Click “Full screen” icon to switch to full screen mode.

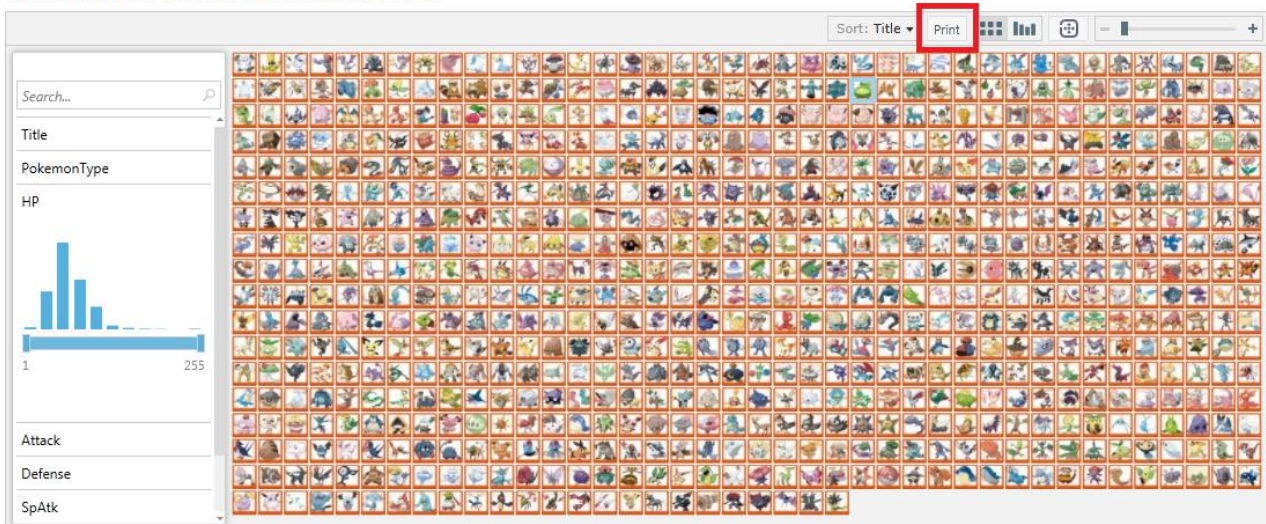
Virto Pivot View Web Part for SharePoint 2013



Click “Escape” to exit the full screen mode.

In case you need to print data from Pivot View web part, use “Print” button.

Virto Pivot View Web Part for SharePoint 2013

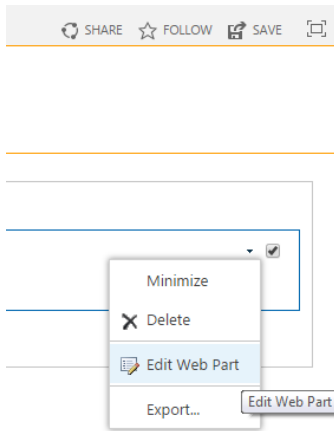


Version Release History

Release Date	Version	Description
11/03/2014	v.4.2.1	[-] Set Graph mode as default view [-] Link on item panel (404 Error)
07/29/2011	v.3.0.0	[+]Toolbar Custom Action Button and multiple selection [+]Cache Settings
05/03/2011	v.2.2.0	[+] Column types "Managed Metadata" and "Calculated" are supported [+] Print option is added [+] Fullscreen mode
03/23/2011	v.2.0.0	[+] New types of data Data Sources - User Directory, Active Directory, MS SQL are added [+] Quick data source wizard for quick adding of data sources with automatically generated Facet Categories [+] Content type icon is shown for items in cases when they contain no images (custom icons are supported)
12/01/2011	v.1.5.0	[+] Custom action button [-] Facet categories order
10/01/2010	v.1.0.0	First public release.

Virto SharePoint HTML5 Pivot View Settings

To adjust Virto Pivot View go to “Edit” block.



You have to define pictures data source, define settings of facet categories and then use available features to view the collection.

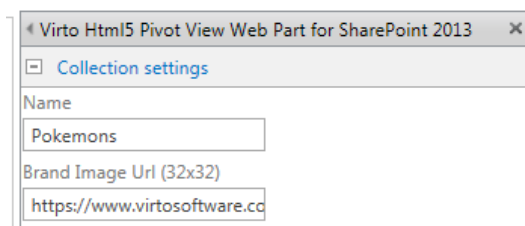
Collection contains top-level properties and elements, which pertain to the entire set of items contained within the collection.

The **FacetCategories** section is a child of the **Collection** node. For each facet attached to an item, a corresponding facet category must exist. Here, the name of the facet, the type, a format string, and various visibility options can be set. The type field can be *Number*, *String*, *LongString*, *DateTime*, or *Link*.

Another child of collection is the **Items** node. Because this is where each individual item of the collection is defined, this node usually contains the majority of the information in the file. Each item can have properties such as a double-click action link, *Href*; a name, *Name*; a description, *Description*; an id, *Id*; an image asset, *Img*; or any number of custom properties declared in the *Facets* section.

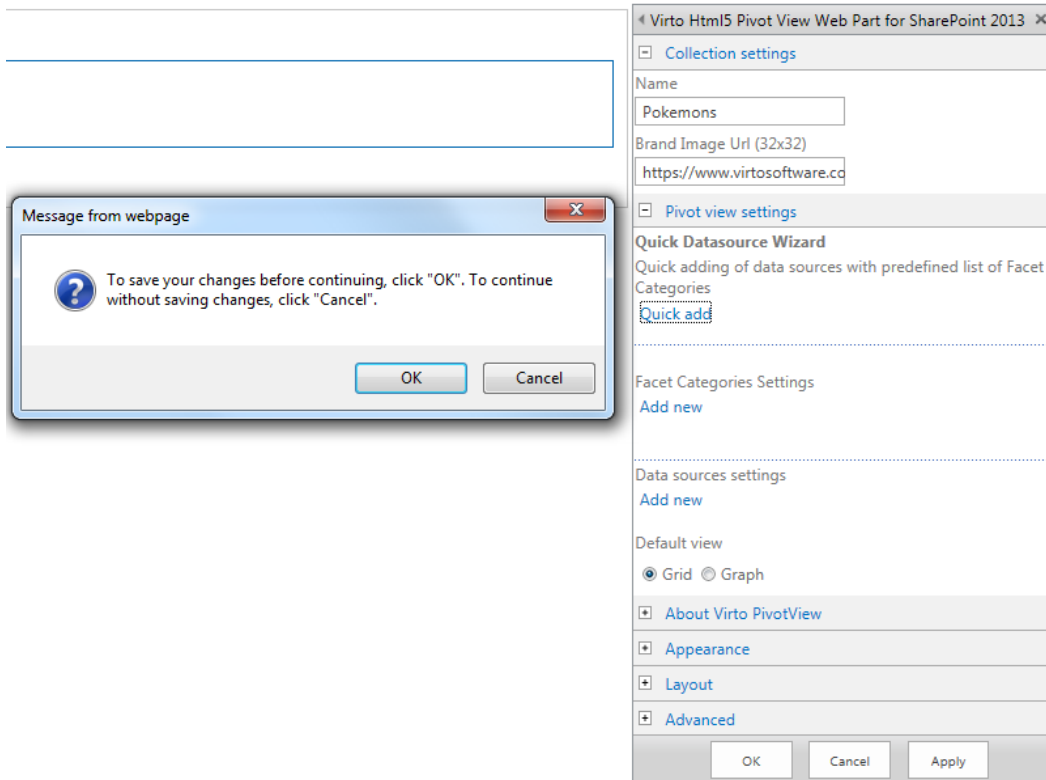
Creating Pictures Collection

For instance, you need to create a collection of pokemons. Click “Edit web part” and enter title of your collection. You can define brand image URL to be displayed on the Pivot View page.

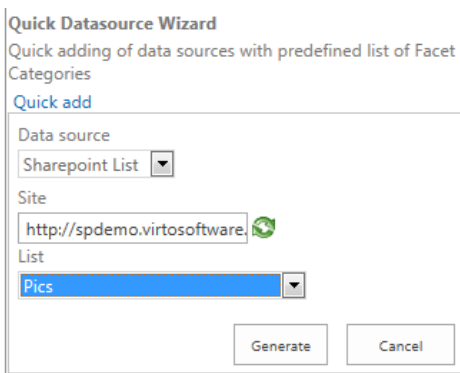


Now you can use Quick Datasource Wizard to add a new data source with predefined facet categories.

Click “OK” in pop-up window or apply unsaved changes to web part before you continue.

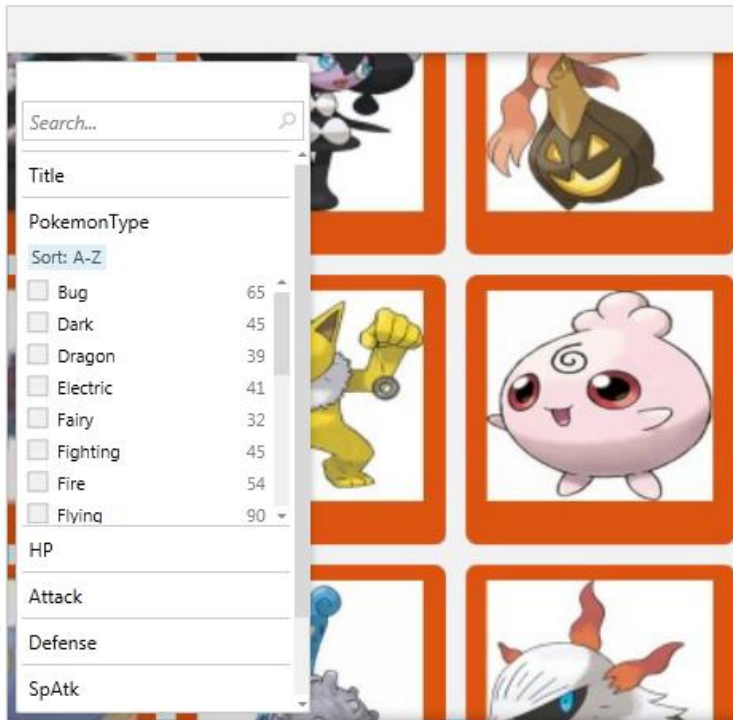


Select a data source type, choose site and list, that contain the data for your collection. Click “Generate”.

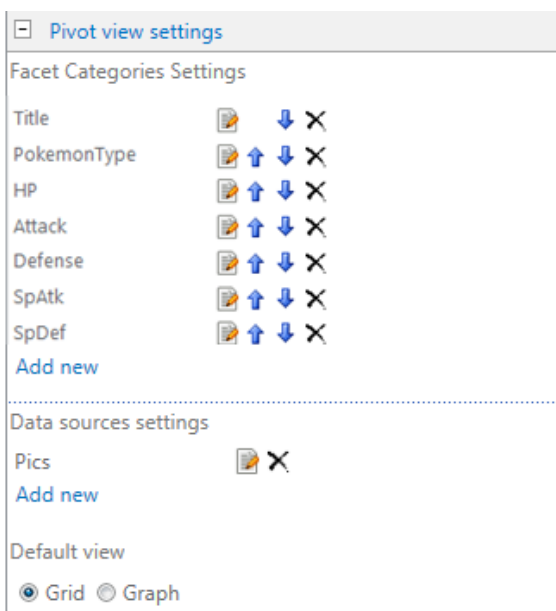


Facet categories contain settings of categories that will be used for Pivot View. By defining facet categories, you define possible ways of sorting collection items.

Virto Pivot View Web Part for SharePoint 2013

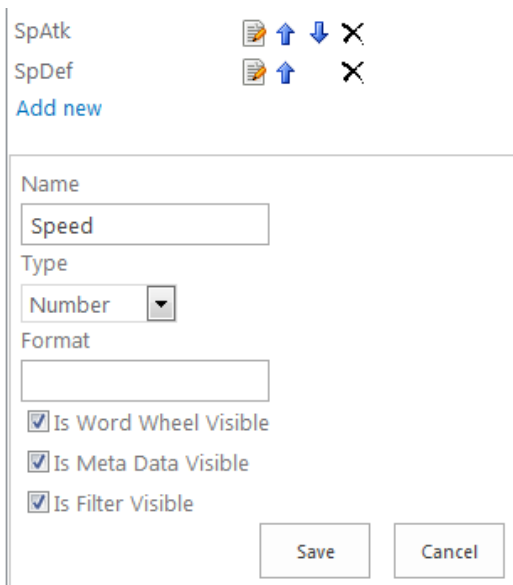






The quick wizard allows you to add all existing list fields as facet categories. You can delete them or add new categories, it is also possible to assign the order of categories. Use arrows on the right to define order of facet categories.






The list of facet categories will be generated automatically (mapping will be performed automatically as well) so you have no need to map fields manually in Data Source settings section.

Click "Add new" to add a new category.



SpAtk    

SpDef   

[Add new](#)

Name
Speed

Type
Number ▼

Format

☒ Is Word Wheel Visible

☒ Is Meta Data Visible

☒ Is Filter Visible

Save Cancel

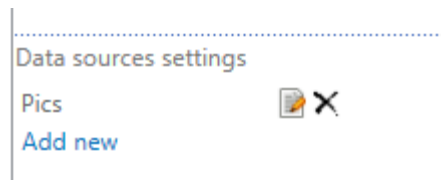
Enter name of facet category. Select type (it can be *Number*, *String*, *LongString*, *DateTime*, or *Link*.) Define format if it is required.

Click “Save” to save the settings.



Data Source Settings of Virto SharePoint HTML5 Pivot View

SharePoint List

Go to “Data source settings” section and edit the existing data source or click “Add new”. Select SharePoint list as a data source.

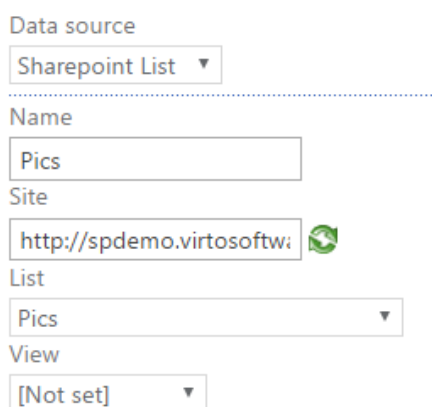


Data sources settings

Pics  


[Add new](#)

Type data source name and select SharePoint site that contains the required list. You can also select a specific list view (including custom views) to display items.



Data source
Sharepoint List ▼

Name
Pics

Site
 

List
Pics ▼

View
[Not set] ▼

Now match fields of **facet categories** and SharePoint **list fields** in “Mapping fields” block.

Note: “Name” field is required.

Mapping fields	
Name	Name
Description	ID
Title	Title
PokemonType	PokemonType
HP	HP
Attack	Attack
Defense	Defense
SpAtk	SpAtk
SpDef	SpDef
Speed	Speed

Then you need do define image settings for Pivot View. Define width and height of images (in pixels).

Image Settings	
Image Max Size (px.)	
Width	512
Height	512

For example, the left picture has 512x512 px size, and the picture from another data source on the right has 300x300 px size.



Note: page load time depends on image size. Do not define too large size for images in the Pivot View.

Note: free version of *Virto Pivot View* allows up to **300** items in the list

Then move to **image settings** block and define parameters of displayed images.

Background

Expand “**Background**” block. Define border style (“None”, “Rectangle” or “Rounded”), border and background color.

Background

Border Style

☐ None
 ☐ Rectangle
 ☒ Rounded

Border Color

R: 221

G: 85

B: 17

Background Image Url

Background Color

R: 51

G: 102

B: 204

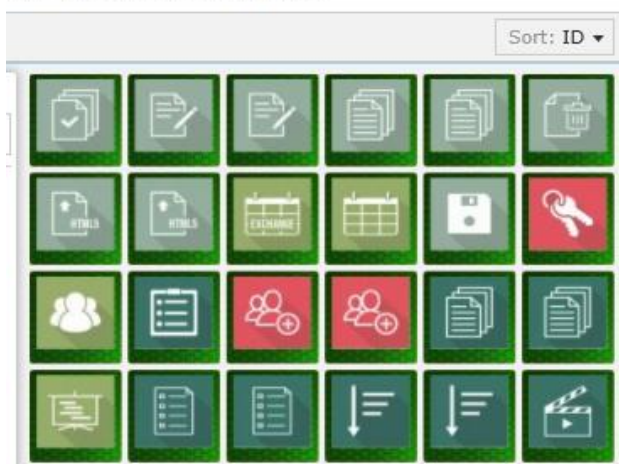
Or you can define a picture as a background. Type background image URL.

Background Image Url

For example, you can apply a custom background.

Copyright © 2017 All rights reserved. www.virtosoftware.com

Part for SharePoint 2013



Image

Expand “**Image**” block, define image background color and image URL key.

Image

Image Url

{ImageUrl}

Note: fields support active keys {SiteUrl} {WebUrl} {ListUrl}
{ImageUrl} {ThumbnailUrl} and {FieldName}.

Image Background Color

R:

255

G:

255

B:

255

Image Offset

Left	<div>40</div>
Top	<div>30</div>
Right	<div>40</div>
Bottom	<div>80</div>

The background color is applied to pictures with transparency.

Item URL is usually used to display items from a picture library. But you can also use list, web, or site URLs instead of items URL.

Note: fields **Background Image Url** and **Image Url** support active keys {SiteUrl} {WebUrl} {ListUrl} {ItemUrl} and {FieldName}.

In the following example, the blue background color is selected for the data source on the left. And the list URL (a default picture without a list item preview) is displayed instead of item.

Image

Image Url

{ListUrl}

Note: fields support active keys {SiteUrl} {WebUrl} {ListUrl} {ImageUrl} {ThumbnailUrl} and {FieldName}.

Image Background Color



R: 51 G: 102 B: 204

Image Offset

Left	40
Top	30
Right	40
Bottom	80



Then you have to define image offset size in pixels.

Image Offset

Left	10
Top	10
Right	10
Bottom	10

In the following example, the offset size of borders is 10 px for each side.



Action

In case you need to add a special button, that leads to a site or list item, you can enable “Action” block. Check the box “Enable Action” in the settings block, type name of the button and enter the text of note that will be displayed when placing cursor on the button. Click “OK” or “Apply” to save the settings.

Action settings

☒ Enable Action

Action

More info

Description

Find more info in goog


☒ Open link in new window

To define a site or field that will be displayed when using this button, go to data source settings, expand “Action” block and define where button should lead. Click “Save”.

Note: fields support active keys {SiteUrl}, {WebUrl}, {ListUrl}, {ItemUrl}, {ThumbnailUrl}, and {FieldName}.

Data sources settings

PokemonsData



Add new

+ Background

+ Image

- Action

Action

https://www.google.com/search

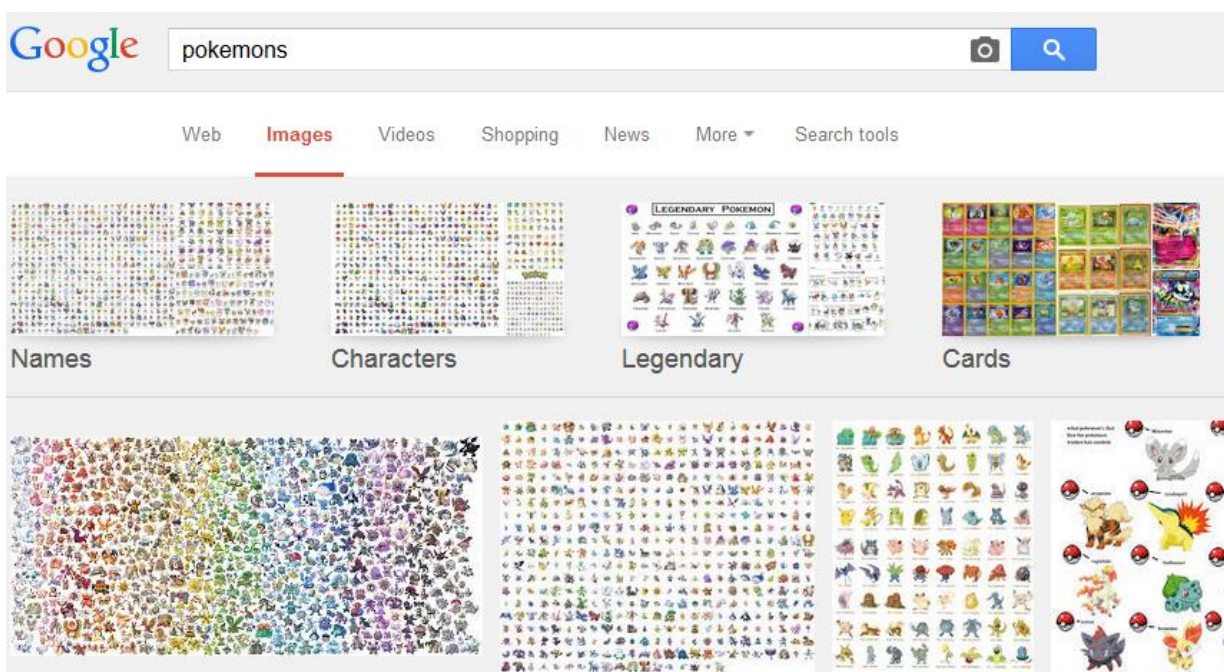
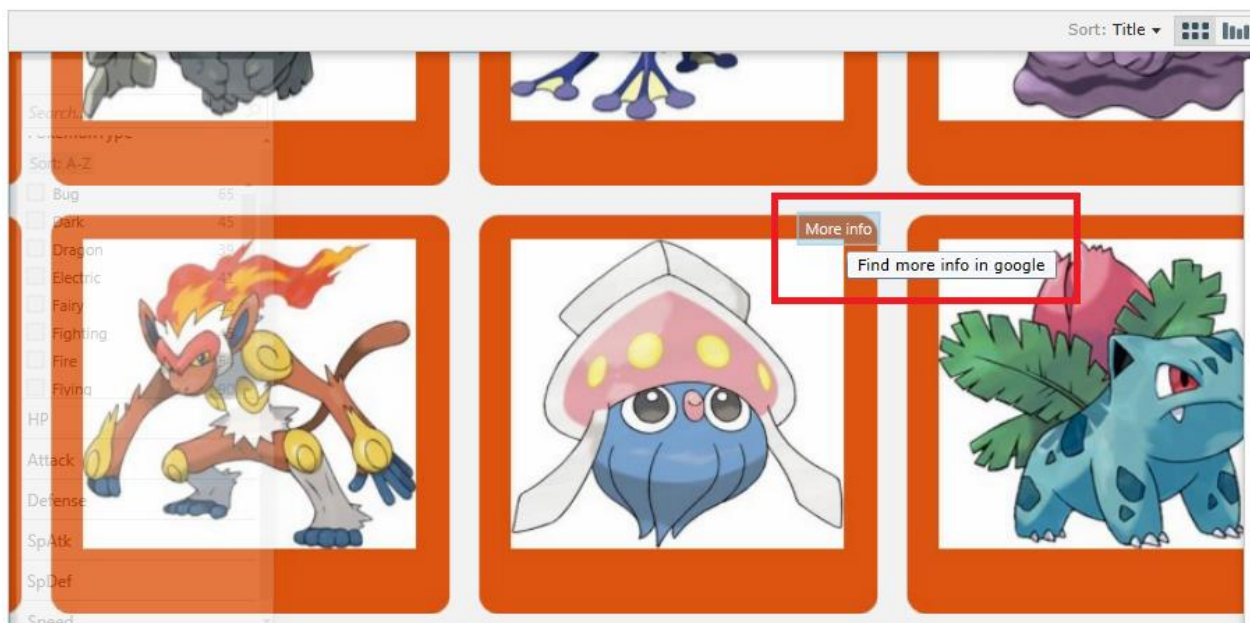
Note: fields support active keys {SiteUrl} {WebUrl} {ListUrl} {ItemUrl} {ThumbnailUrl} and {FieldName}.

+ Text

Save

Cancel

As a result, button will be displayed for an item when hovering the mouse point on it and the redirect link will be opened in a new window after clicking on it. It is the link to Google search results in our case.



Text

Expand “Text” block. Choose field from which text for images will be taken. Define text color.

Image Offset

Left	10
Top	10
Right	10
Bottom	40

☒ Action
☐ Text

Title Field
 Title ▼

Text Color
 Font Size 16

R: 255 G: 255 B: 255

The left picture has the bottom offset 40 px and the white text from the field “Title” displayed.



When you define all settings for the new data source click “Save”. To save all the settings click “OK” or “Apply”.

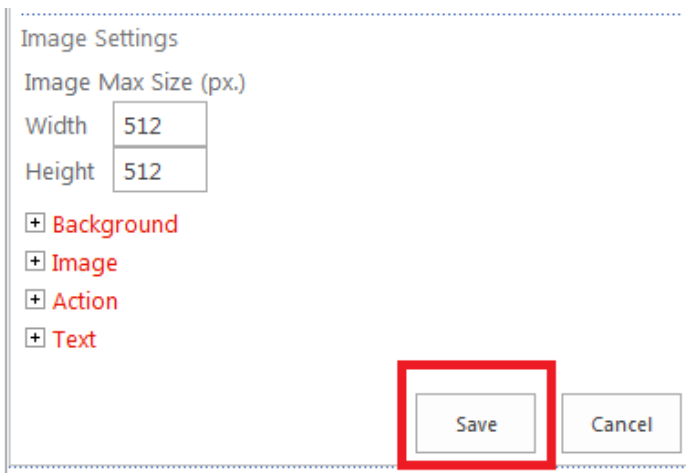


Image Settings

Image Max Size (px.)

Width 512

Height 512

+ Background

+ Image

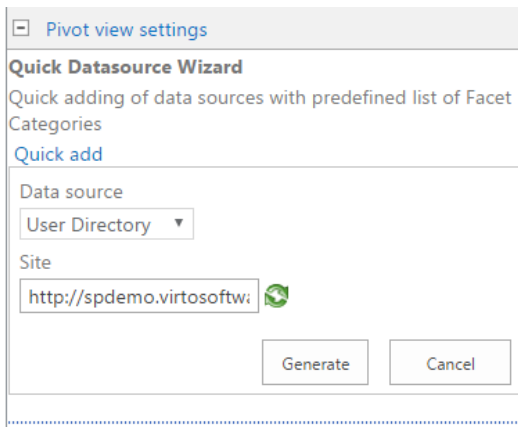
+ Action

+ Text

Save Cancel

User Directory

Go to “Pivot view settings” section and click “Add new” or use Quick Data source wizard. Select user directory as a data source.



Pivot view settings

Quick Datasource Wizard

Quick adding of data sources with predefined list of Facet Categories

[Quick add](#)

Data source

User Directory

Site

http://spdemo.virtosoftware.com



Generate Cancel

Define name of user directory, enter site URL. Click “Generate”.

Now click “Edit” icon on the right side of created User directory data source and match fields of **facet categories** and user directory **fields** in “Mapping fields” block. Most fields’ values are detected automatically.

Note: “Name” field is required.

Data sources settings

User Directo...  

[Add new](#)


Data source

User Directory ▼

Name

User Directory

Site

http://spdemo.virtosoftw: 

Mapping fields

Name	Name ▼
Description	[Not set] ▼
Account	Account ▼
Work email	Work email ▼
Mobile phone	Mobile phone ▼

Then you need do define image settings for Pivot View. Define width and height of images (in pixels).

Image Settings

Image Max Size (px.)

Width	512
Height	512

Note: page load time depends on image size. Do not define too large size for images in the Pivot View.

Then go to **image settings** section and define parameters of displayed images. The settings can be customized in the same way as it is described in “SharePoint list” chapter.

SQL table

Go to “Pivot view settings” section and click “Add new” or use Quick Data source wizard. Select SQL table as a data source.

Data source

User Directory ▼

Active Directory

Sharepoint List

Sql Source

User Directory

Define name of SQL table. Check the box “Use trusted connection” if you need. Connect to SQL server by entering user name and password. Click “Connect”.

Data source
 Sql Source ▼

☐ Use Trusted Connection (Only for Databases on this SharePoint Server)

SQL Server
 MC06\SQLEXP

User Name
 admin

Password

Connect

Then define database name, SQL table name and select primary key field.

Database Name
 PivotTest ▼

Table Name
 HeadTable ▼

Select primary key field
 Name ▼

Now match fields of SQL source and facet categories in “Mapping fields” section.

Mapping fields

Name Name ▼

Description Department ▼

Note: “Name” field is required.

Then you need to define image settings for Pivot View. Define width and height of images (in pixels).

Image Settings

Image Max Size (px.)

Width	512
Height	512

Note: page load time depends on image size. Do not define too large size for images in the Pivot View.

Then go to **image settings** section and define parameters of displayed images. The settings can be customized in the same way as it is described in “SharePoint list” chapter.

Active Directory

Go to “Pivot view settings” section and click “Add new” or use Quick Data source wizard. Select active directory as a data source.

Data source
Active Directory ▼

Fully qualified domain name: (example : mydomain.local)
111.11.0.101

Account name
admin

Password

Generate Cancel

Define name of active directory source. Enter fully qualified domain name, account name and password. Click “Generate”.

Enter the organization unit path in case you need to display items from a certain organizational unit.

Data source
Active Directory ▼

Name
111.11.0.101

Fully qualified domain name: (example : mydomain.local)
111.11.0.101

Account name
admin

Password

Enter the Organization Unit Path
Enter path to Organizational Unit in directory containing users you need to display in the Web Part.

MyCompany\Production

Example: MyCompany\Production. Users within the Production organizational unit from MyCompany organizational unit are displayed in the Web Part. (Leave this text box blank to show users from all Organizational Units.)

Now match fields of active directory and facet categories in “Mapping fields” section.

Mapping fields

Name Name ▼

Description Department ▼

Note: “Name” field is required.

Then you need do define image settings for Pivot View. Define width and height of images (in pixels).

Image Settings

Image Max Size (px.)

Width 512

Height 512

Note: page load time depends on image size. Do not define too large size for images in the Pivot View.

Then move to **image settings** block and define parameters of displayed images.

Then go to **image settings** block and define parameters of displayed images. The settings can be customized in the same way as it is described in “SharePoint list” chapter.

Using Virto SharePoint HTML5 Pivot View

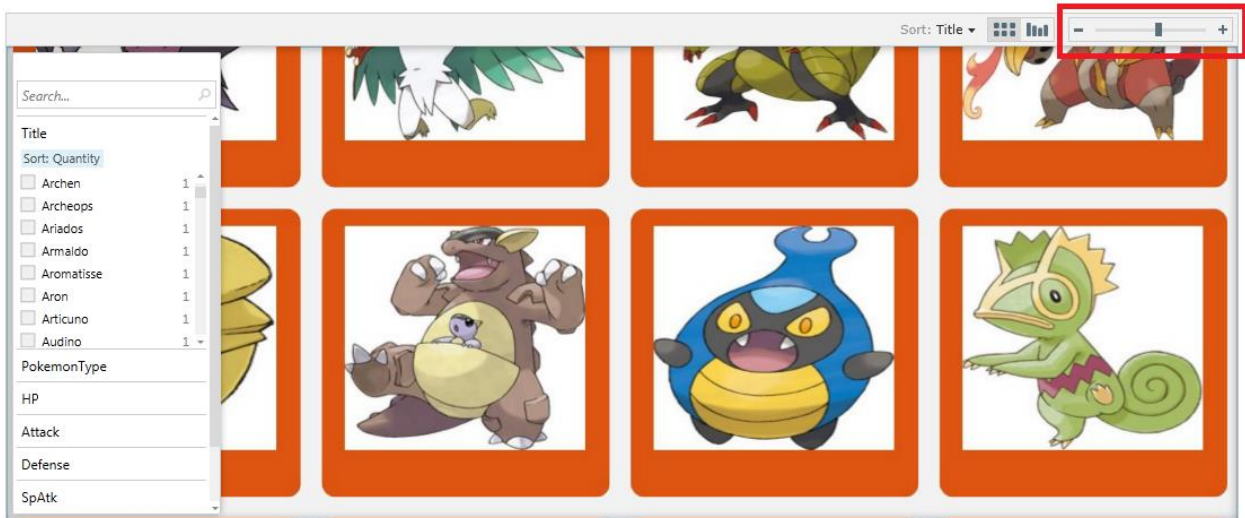
Go to Virto SharePoint Pivot View page.



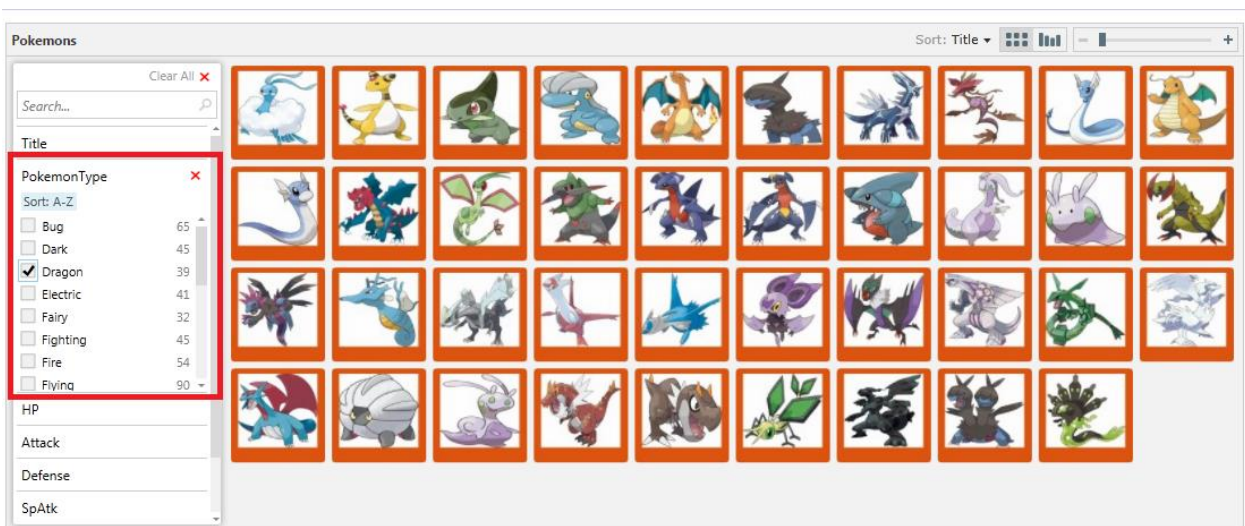
You can view items in grid view or graph view.



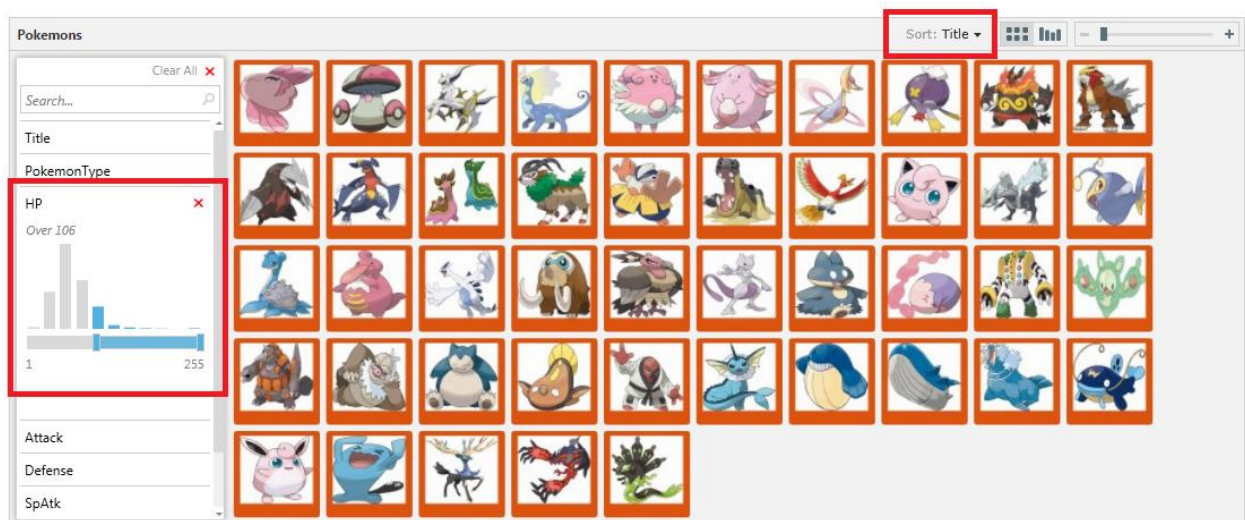
Zoom items to see more detailed information.



Use facet categories on the left side to sort collection and display required items.



You can use two levels of filtering and display required characteristics of Pivot View items.



Version Release History

Release Date	Version	Description
12/28/2016	v.4.4.0	[+] html5 pivot: multiple items selection removed brand image option
12/23/2016	v.4.3.0	[+] Html5 PivotViewer webpart
11/03/2014	v.4.2.1	[-] Set Graph mode as default view [-] Link on item panel (404 Error)
07/29/2011	v.3.0.0	[+]Toolbar Custom Action Button and multiple selection [+]Cache Settings
05/03/2011	v.2.2.0	[+] Column types "Managed Metadata" and "Calculated" are supported [+] Print option is added [+] Fullscreen mode
03/23/2011	v.2.0.0	[+] New types of data Data Sources - User Directory, Active Directory, MS SQL are added [+] Quick data source wizard for quick adding of data sources with automatically generated Facet Categories [+] Content type icon is shown for items in cases when they contain no images (custom icons are supported)
12/01/2011	v.1.5.0	[+] Custom action button [-] Facet categories order
10/01/2010	v.1.0.0	First public release.